

Costpoint Cloud Configuring Ping

Costpoint Cloud Configuring Ping

26 March 2026



While Deltek has attempted to verify that the information in this document is accurate and complete, some typographical or technical errors may exist. The recipient of this document is solely responsible for all decisions relating to or use of the information provided herein.

This publication contains proprietary information that is protected by copyright. All rights are reserved. No part of this document may be reproduced or transmitted in any form or by any means, electronic or mechanical, or translated into another language, without the prior written consent of Deltek, Inc.

© Deltek, Inc.

Deltek's software is also protected by copyright law and constitutes valuable confidential and proprietary information of Deltek, Inc. and its licensors. The Deltek software, and all related documentation, is provided for use only in accordance with the terms of the license agreement. Unauthorized reproduction or distribution of the program or any portion thereof could result in severe civil or criminal penalties.

All trademarks are the property of their respective owners.

Contents

Costpoint Cloud Configuring Ping 1

Costpoint Cloud Configuring Ping

Overview

There are four steps to setting up Ping for Deltek Costpoint Cloud.

Step	Procedure
1	Submit the SSO Setup Service Request
2	Configure Ping
3	Attach your Ping XML certificate to your SSO Setup Service Request ticket
4	Configure Costpoint user accounts to use Ping for authentication

Note: If you are already set up for SAML SSO authentication in Costpoint Cloud, you will need to set up a second configuration for the Costpoint Mobile T&E in the Cloud. Follow the instructions in this guide to set up your configuration. See the *Deltek Costpoint Mobile Time and Expense in the Cloud Administrator Guide* for more information on Costpoint Mobile T&E in the Cloud.

Submit the SSO Setup Service Request

When you submit the SSO Setup Service Request, Deltek will attach the following information to the service request ticket.

- **Single sign on URL:** For example, <https://acme-cp.deltekenterprise/cpweb/LoginServlet.cps>
- **Recipient URL:** For example, <https://acme-cp.deltekenterprise/cpweb/LoginServlet.cps>
- **Destination URL:** For example, <https://acme-cp.deltekenterprise/cpweb/LoginServlet.cps>
- **Audience URI (SP Entity ID):** For example, <https://acme-cp.deltekenterprise/cpweb>
- **Default RelayState:** For example, system=ACME

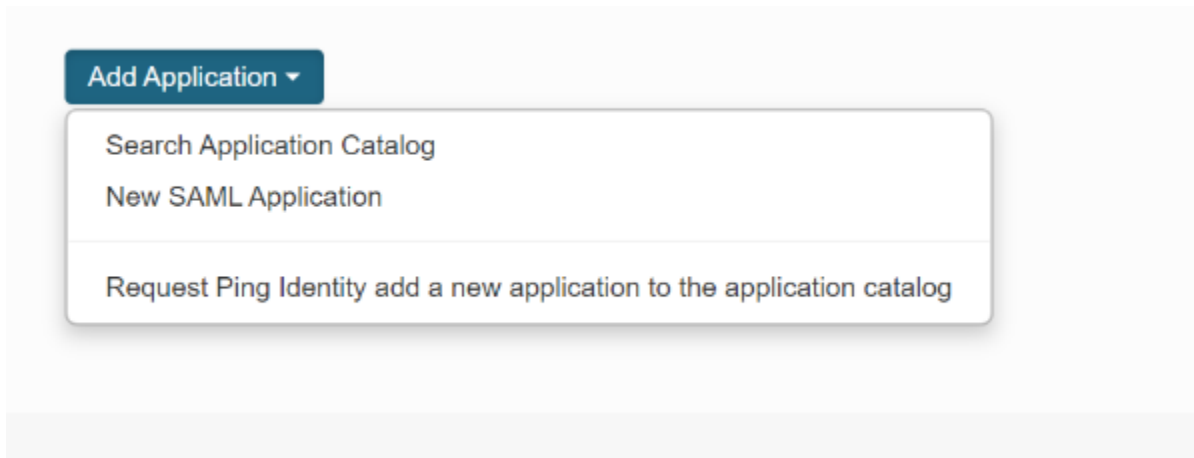
Note: If you are a Costpoint Essentials customer, Deltek will provide you with one set of URLs. If you are a Costpoint Enterprise customer, Deltek will provide you with three sets of URLs.

Note: If you are a Costpoint Mobile T&E customer, Deltek will provide you with two sets of URLs (one for Costpoint and one for Costpoint Mobile T&E).

Configure Ping

To configure Ping:

1. Log into the Ping portal and click **Add Application » New SAML Application**.



2. On the Application Details screen, select or specify the following details and click **Continue to Next Step**.
 - **Application Name:** Enter any name.
 - **Application Description:** Enter the description of the application.
 - **Category:** Select the category for the application.
 - **Graphics (optional):** If so desired, upload a logo for the application.

1. Application Details

Application Name


Application Description

Category

Graphics

Application Icon

For use on the dock



Max Size: 256px x 256px

Max 500 characters

NEXT: Application Configuration

Cancel

Continue to Next Step

3. On the Application Configuration screen, perform the following and click **Continue to Next Step**.

- Click **Download** in **SAML Metadata**. You need the SAML Metadata to configure the application. The metadata is automatically populated in Costpoint.

Note: You may also download the SAML Metadata on the Review Setup screen.

- Click **Select File** in **Upload Metadata** to upload the Costpoint Metadata and to automatically populate the following required fields:
 - **Assertion Consumer Service (ACS)**
 - **Entity ID**
 - **Application URL**

Note: You must specify the fields above if you do not upload the Costpoint Metadata.

2. Application Configuration

I have the SAML configuration

You will need to download this SAML metadata to configure the application:

Signing Certificate
 SAML Metadata [Download](#)

Provide SAML details about the application you are connecting to:

Protocol Version SAML v 2.0 SAML v 1.1

Upload Metadata [Or use URL](#)

Assertion Consumer Service (ACS) *

Entity ID *

Application URL

Single Logout Endpoint

Single Logout Response Endpoint

Single Logout Binding Type Redirect Post

Primary Verification Certificate No file chosen

Secondary Verification Certificate No file chosen

Encrypt Assertion

Signing Sign Assertion Sign Response

Signing Algorithm

Force Re-authentication

Keep the following in mind when creating your connection:

1. Both SP- and IdP-Initiated SSO are allowed
2. Map SAML_SUBJECT in your attribute contract, plus any attributes (configure them in PingOne later)
3. Allow outbound POST or redirect
4. Allow outbound POST

NEXT: SSO Attribute Mapping

4. On the SSO Attribute Mapping screen, click **Continue to Next Step**:

3. SSO Attribute Mapping

Map the necessary application provider (AP) attributes to attributes used by your identity provider (IdP).

Application Attribute	Identity Bridge Attribute or Literal Value	Required
<input type="button" value="Add new attribute"/>		

NEXT: Group Access

5. On the Group Access screen, search for the user group that will access the application and click **Continue to Next Step**.

4. Group Access

Select all user groups that should have access to this application. Users that are members of the added groups will be able to SSO to this application and will see this application on their personal dock.

Group Name	
Domain Administrators@directory	<input type="button" value="Add"/>
Users@directory	<input type="button" value="Add"/>
CostpointTestGroup	<input type="button" value="Add"/>

NEXT: Review Setup

6. On the Review Setup screen, review the setup details and click **Finish**.

Note: If you have not yet downloaded the SAML Metadata, download it on this screen.

Note: If you need to change any setup details, click **Edit**.

5. Review Setup

Test your connection to the application

Icon

Name Deltek Cloud - ACME

Description Deltek Cloud - ACME

Category Information Technology

Connection ID a917f42-b861-45c3-b85b-b40c70c3776e

(Optional) Click the link below to invite this SaaS Application's Administrator to register their SaaS Application with PingOne.

[Invite SAAS Admin](#)

These parameters may be needed to configure your connection

saasid 51c06af6-4da2-4b20-ac8a-19a6984cc772

Issuer <https://pingone.com/idp/cd-1009457261.deltek>

idpid a5a31047-311f-45a1-bafe-6ae4ccaf51c6

Protocol Version SAML v 2.0

ACS URL <https://acme-cp.deltekenterprise/cpweb/LoginServlet.cps>

entityId <https://acme-cp.deltekenterprise/cpweb>

Initiate Single Sign-On (SSO) URL <https://sso.connect.pingidentity.com/sso/sp/initssso?saasid=51c06af6-4da2-4b20-ac8a-19a6984cc772&idpid=a5a31047-311f-45a1-bafe-6ae4ccaf51c6>



Single Sign-On (SSO) Relay State <https://pingone.com/1.0/51c06af6-4da2-4b20-ac8a-19a6984cc772>

Signing Certificate [Download](#)

SAML Metadata [Download](#)

Single Logout Endpoint

Single Logout Response Endpoint

Signing Assertion

Signing Algorithm RSA_SHA256

Encrypt Assertion false

Force Re-authentication false

Click the link below to open the Single Sign-On page:

[Single Sign-On](#)

[Edit](#)

[Finish](#)

Note: For Costpoint Enterprise users, you must repeat step 1 for each Cloud Environment (Production, Implementation/Test/Preview, Dev) that you would like to set up the Okta for.

Note: For Costpoint Mobile T&E users, you must repeat step 1 for each Costpoint Mobile T&E

environment that you would like to set up Okta for.

Attach Your Ping XML Certificate to Your SSO Setup Service Request Ticket

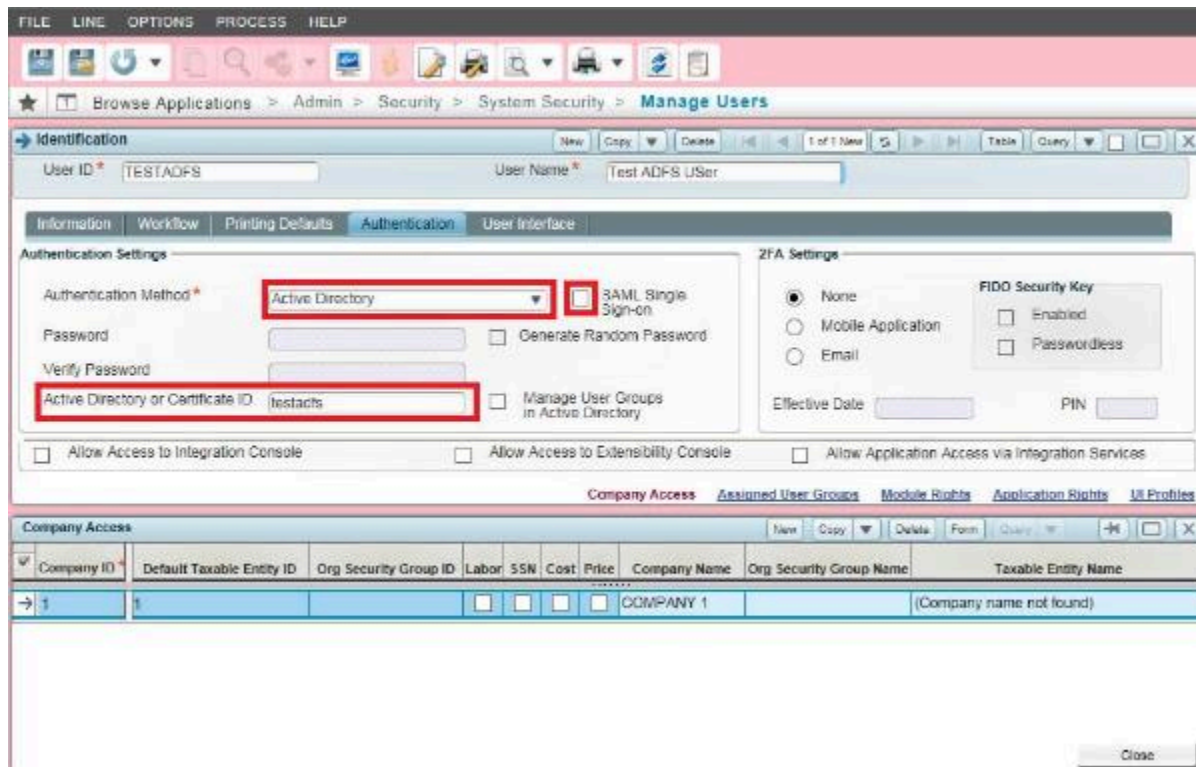
Attach the Ping XML certificate you created in Step 3 (Configure Ping) to the SSO Setup Service Request ticket you created in Step 2 (Submit the SSO Setup Service Request).

Configure Costpoint User Accounts to Use Ping for Authentication

In order to log into Costpoint with your Ping credentials, you must first modify the authentication properties of your Costpoint user account.

To modify the authentication properties:

1. Log into your Costpoint systems using a Cloud Active Directory (User Manager) account that has access to the Manage Users application within Costpoint.
2. Navigate to **Admin » Security » System Security » Manage Users** and locate the account to modify.
3. Click the Authentication tab.



4. In Authentication Method, select Active Directory.
5. In the Active Directory or Certificate ID field, enter the user's Active Directory user name in your domain. This can be the username or the username in UPN format (for example, user@mydomain.local).
6. If the user will be using SAML, select the SAML Single Sign-on check box.
7. Save the record.
8. Repeat steps 3 through 7 for each user in the Costpoint system who want to use the Ping authentication.

Note: Repeat steps 3 through 7 for each user in the Costpoint Mobile T&E system who want to use the Ping authentication.