

Costpoint Cloud HDPODBC and JDBC Setup and Configuration Guide

Costpoint Cloud HDPODBC and JDBC Setup and
Configuration Guide



While Deltek has attempted to verify that the information in this document is accurate and complete, some typographical or technical errors may exist. The recipient of this document is solely responsible for all decisions relating to or use of the information provided herein.

This publication contains proprietary information that is protected by copyright. All rights are reserved. No part of this document may be reproduced or transmitted in any form or by any means, electronic or mechanical, or translated into another language, without the prior written consent of Deltek, Inc.

© Deltek, Inc.

Deltek's software is also protected by copyright law and constitutes valuable confidential and proprietary information of Deltek, Inc. and its licensors. The Deltek software, and all related documentation, is provided for use only in accordance with the terms of the license agreement. Unauthorized reproduction or distribution of the program or any portion thereof could result in severe civil or criminal penalties.

All trademarks are the property of their respective owners.

Contents

Costpoint Cloud HDPODBC and JDBC Setup and Configuration Guide..... 1

Costpoint Cloud HDPODBC and JDBC Setup and Configuration Guide

Overview

Read-only access to your Costpoint Cloud database is provided by the Hybrid Data Pipeline client driver. Setting up the driver is a simple three-step process:

- **Step One:** Submit the ODBC Read-Only Access Service Request
- **Step Two:** Install the Client. You must determine if you are installing the Windows or Linux client.
- **Step Three:** Configure the Client

Step One: Submit the ODBC Read-Only Access Service Request

To submit the service request:

1. Your company's SaaS Customer Administrator should log into the [Deltek Support Center](#), navigate to the [Deltek Cloud Solutions](#), and select the applicable Cloud Product.
2. In the **Service Request** section, select the **ODBC Read Only Access** radio button.
3. Click the link in the Service Request to download the spreadsheet that is used to log all changes to access.
 - a. You can also Allow List IP address(es) to allow your ODBC/JDBC connections to originate from. You may have up to 5 C Ips that are individual Ips, a range of Ips or list an entire subnet of Ips.
4. Encrypt the spreadsheet using PGP then submit using the Deltek SFTP Service.
5. To initiate the service request, click **Submit**.
6. Upon submission, a dialog box displays containing the **Case No.** for the request and a link to [Manage Cases](#) where the case can be viewed or updated.
7. Upon completion, Deltek will notify the new account holder via phone call of their credentials and configuration settings needed to connect to the service.

In addition, the SaaS Administrator will receive a confirmation email when the request is completed.

Step Two: Install the Client Driver

You have the option to utilize ODBC or JDBC connectivity from either a Windows OS or a Linux OS. You will need to install the appropriate client driver for the system you are configuring.

Note: If you took advantage of the IP Allow listing, ensure that you only configure the driver on machines with those IP (s) or the connection will not work.

Install the Windows ODBC Client Driver

Download the Hybrid Data Pipeline Windows ODBC Client Driver

To download the driver, navigate to <https://dsm.deltek.com/DFVE/odbc/GCCHDPODBCDriverWin.zip>

For US Only customers, navigate to <https://dsm.deltek.com/DFVE/odbc/USOHDPDBCDriverWin.zip>

The downloaded zip includes the following files:

- config.properties
- ddcloud.pem
- ddcloudTrustStore.jks
- OnPremise.properties
- PROGRESS_DATADIRECT_HDP_ODBC_WIN_32.exe
- PROGRESS_DATADIRECT_HDP_ODBC_WIN_64.exe
- DeltekCostpointCloudHDPODBCSetupandConfigurationGuideGCCMod
- HDP ODBC Architecture Incompatibility

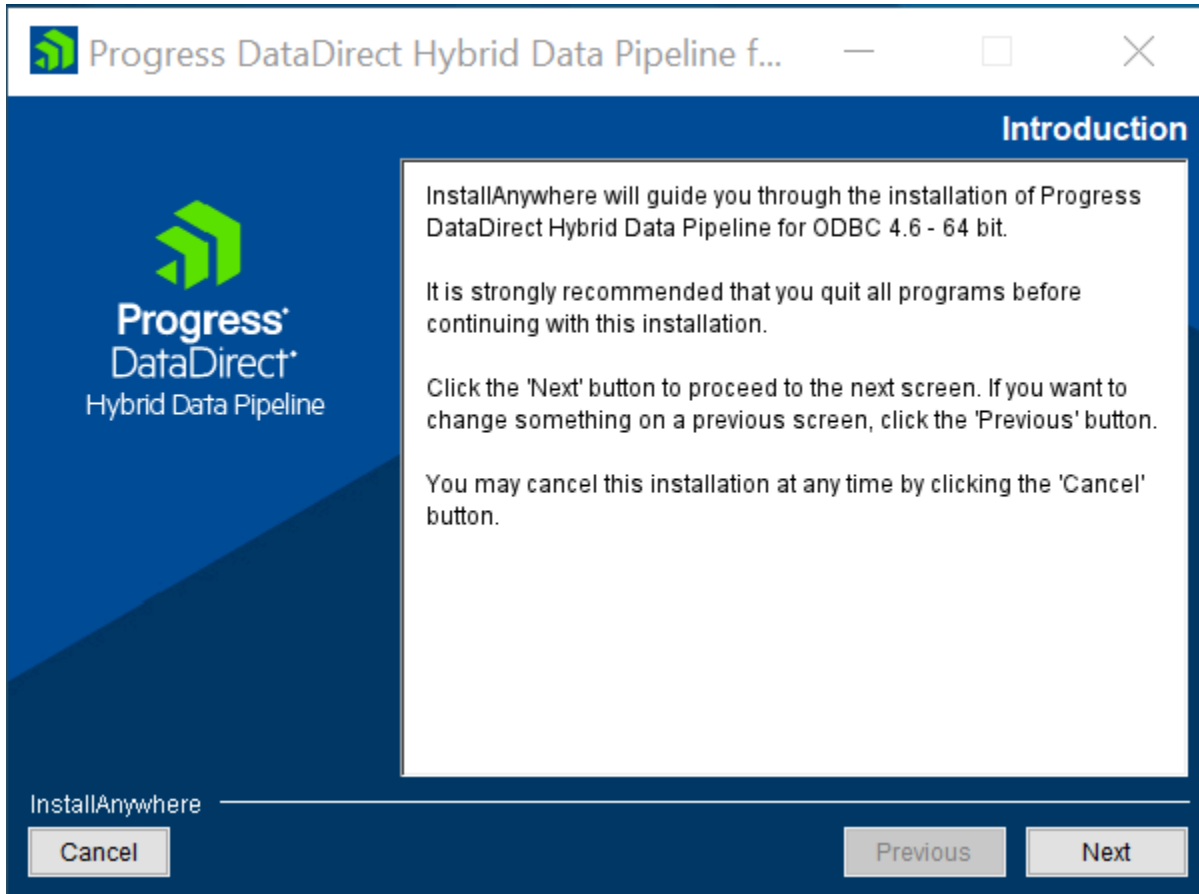
Install the Hybrid Data Pipeline ODBC Client

To install the client:

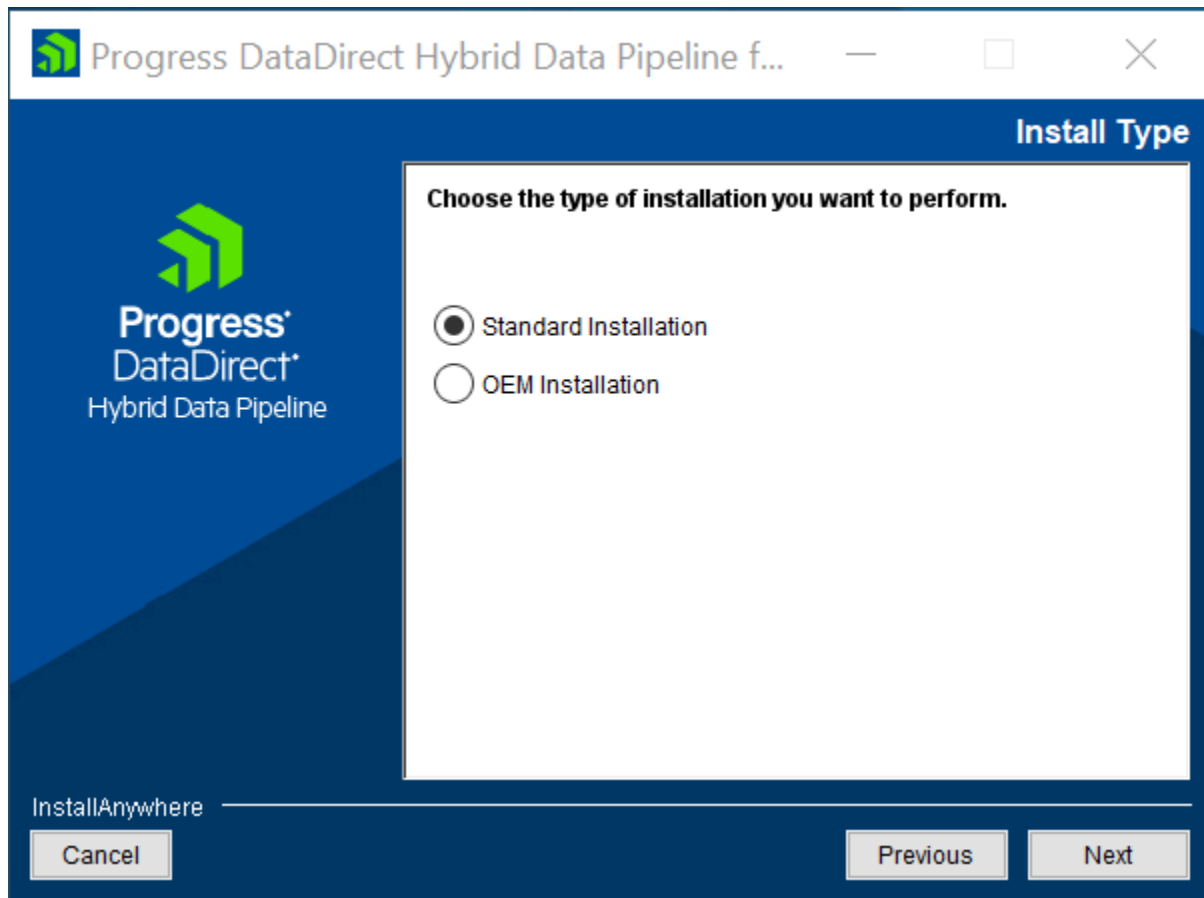
1. To begin the installation, double-click PROGRESS_DATADIRECT_HDP_ODBC_WIN_XX.exe.

Note: Be sure to install the correct architecture of the driver for your specific application, either 32-bit or 64-bit.

2. When the Introduction page of the installation wizard displays, click **Next**.

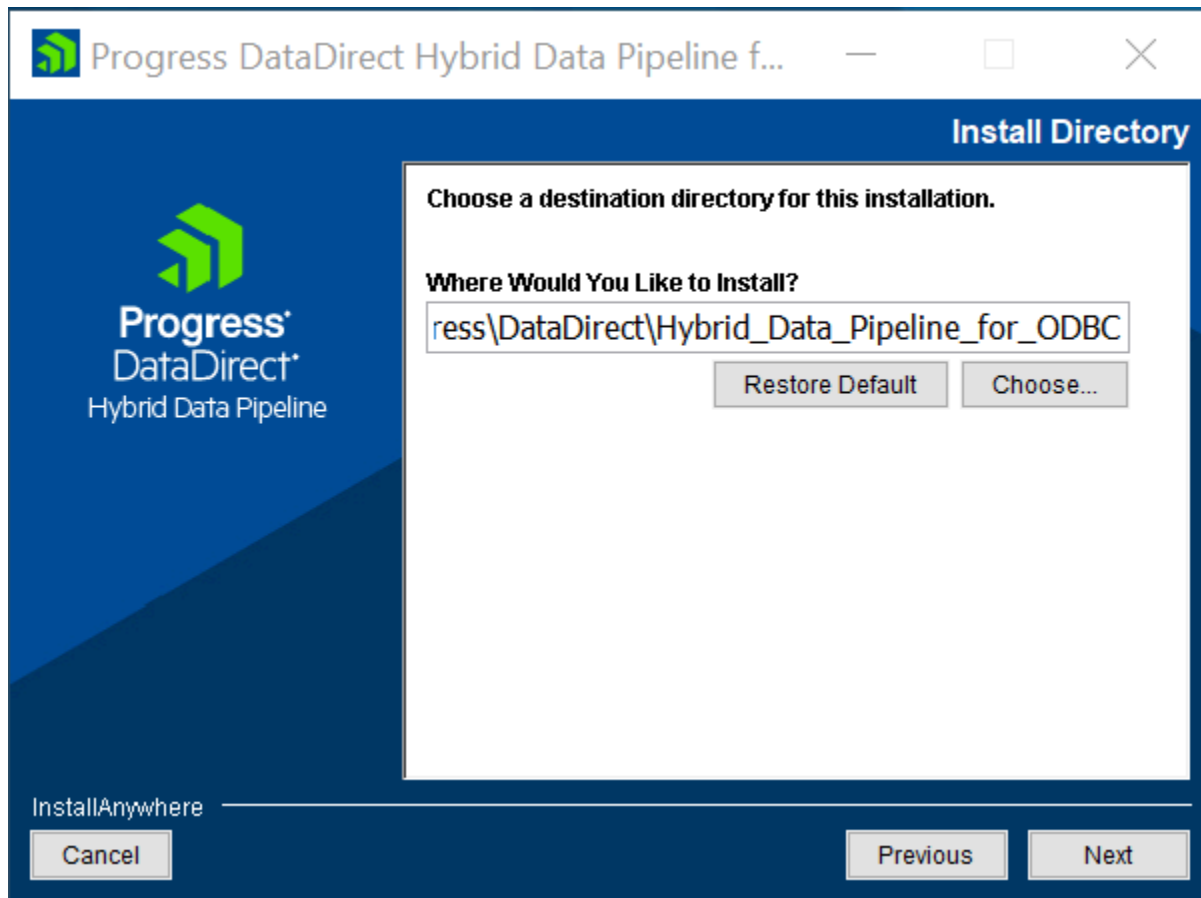


3. On the Install Type page, accept the default selection of **Standard Installation**, and click **Next**.



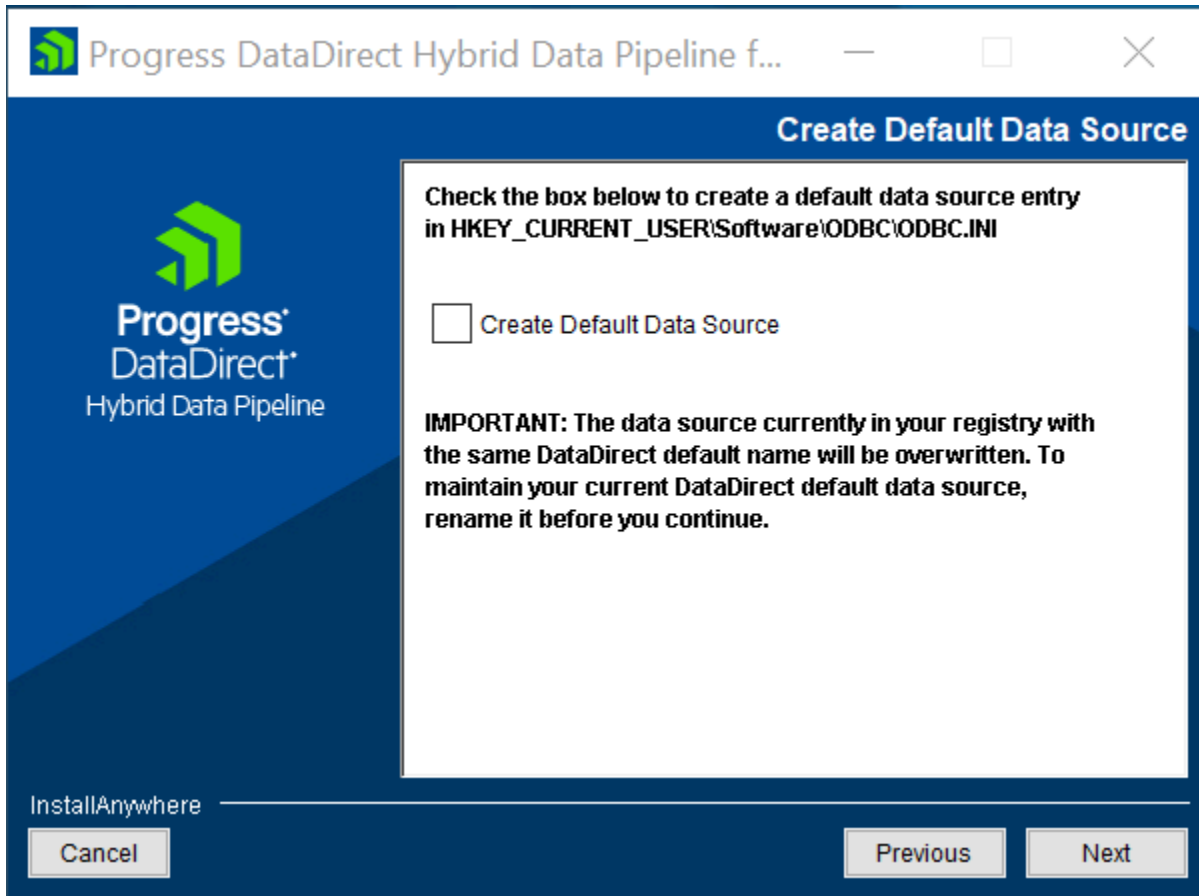
4. On the Install Directory page, accept the default installation path or select your own, and click Next.

Note: Deltek recommends accepting the default installation location.



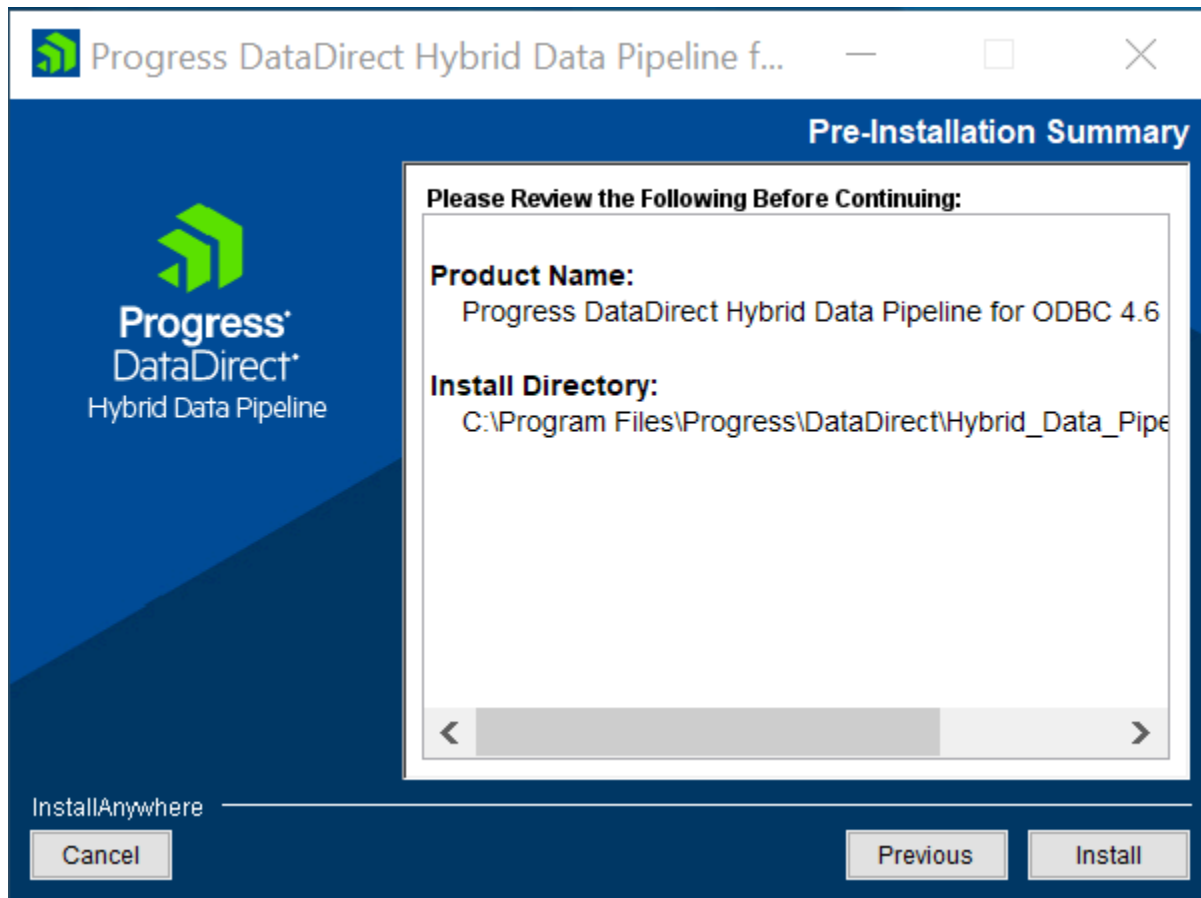
5. On the Create Default Data Source page, ensure the **Created Default Data Source** checkbox is not selected, and click **Next**.

The default option is **NOT** to create a default data source.

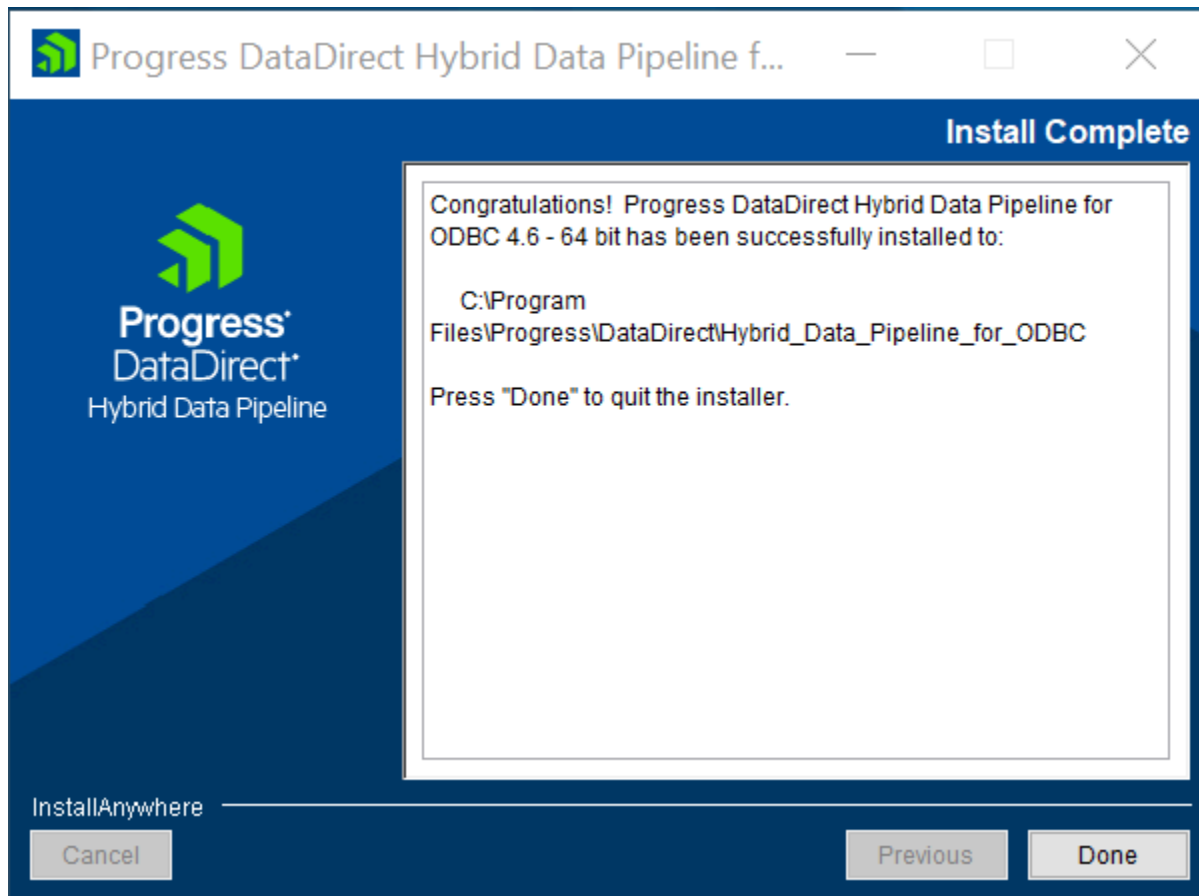


6. On the Pre-Installation Summary page, confirm all information is correct, and click **Install**.

Note: If any of the information is incorrect, click [Previous](#) to fix.



7. After the installation is complete, click Done.



Install the Windows JDBC Client Driver

Download the Hybrid Data Pipeline Windows JDBC Client Driver

To download the driver, navigate to <https://dsm.deltek.com/DFVE/odbc/GCCHDPJDBCdriverWin.zip>

For US Only customers, navigate to <https://dsm.deltek.com/DFVE/odbc/USOHDPJDBCdriverWin.zip>

The downloaded zip includes the following files:

- config.properties
- ddcloud.pem
- ddcloudTrustStore.jks
- OnPremise.properties
- PROGRESS_DATADIRECT_HDP_JDBC_WIN.exe
- DeltekCostpointCloudHDPODBCSetupandConfigurationGuideGCCMod
- HDP ODBC Architecture Incompatibility

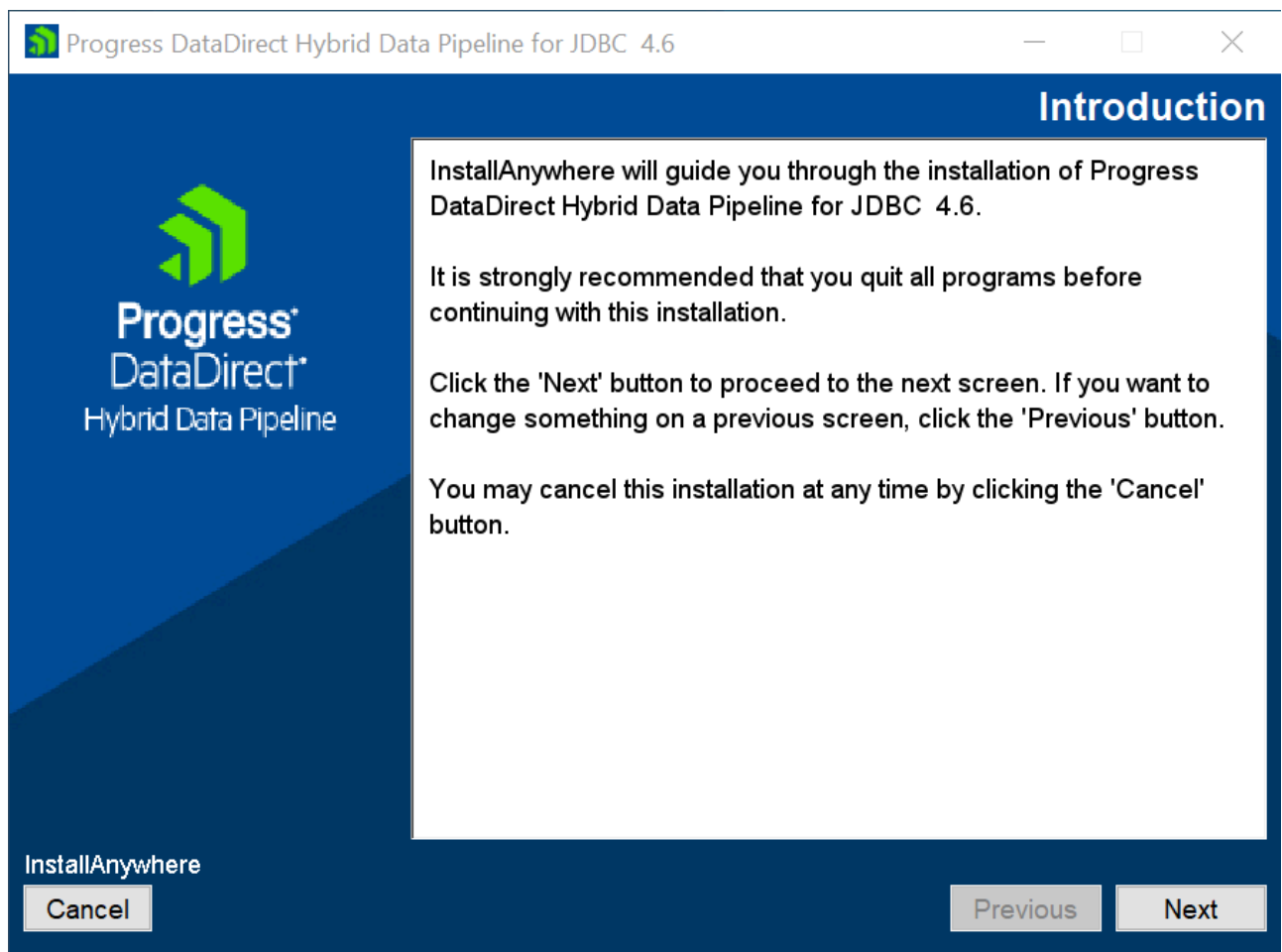
Install the Hybrid Data Pipeline JDBC Client

To install the client:

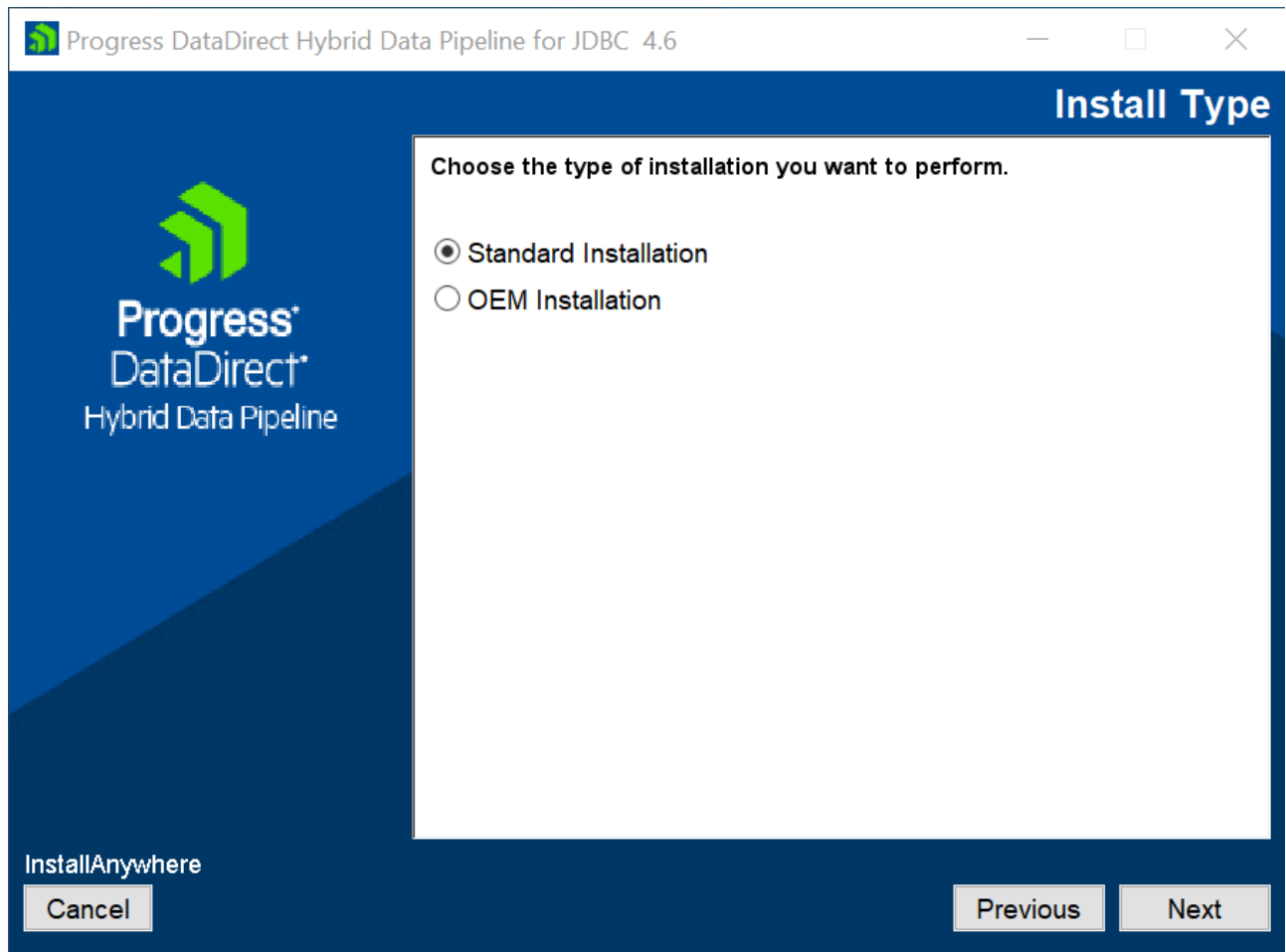
1. To begin the installation, double-click PROGRESS_DATADIRECT_HDP_JDBC_WIN.exe.

Note: Oracle Java or OpenJDK version 8 or 11 is required.

2. When the Introduction page of the installation wizard displays, click **Next**.

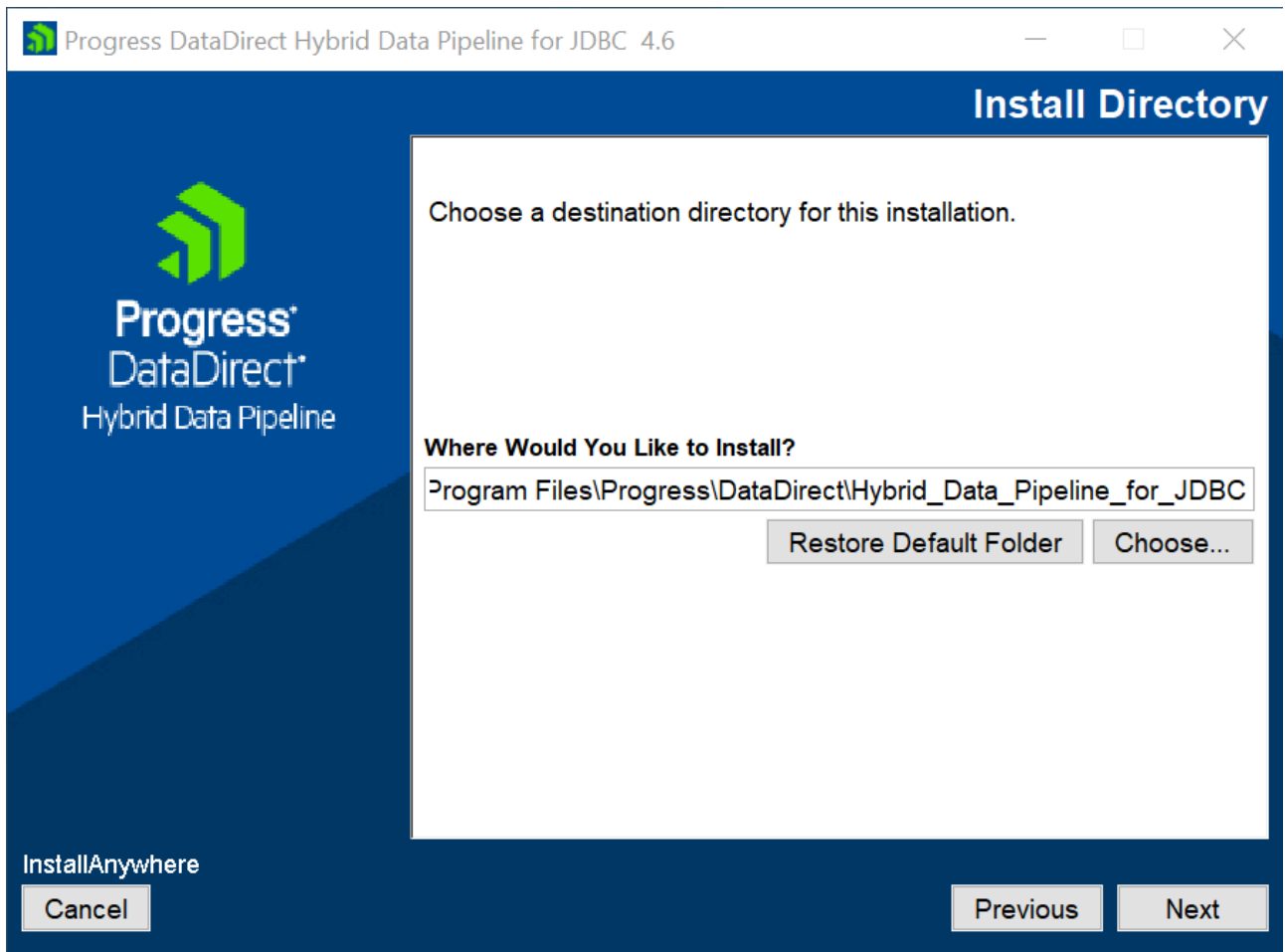


3. On the Install Type page, accept the default selection of **Standard Installation**, and click **Next**.



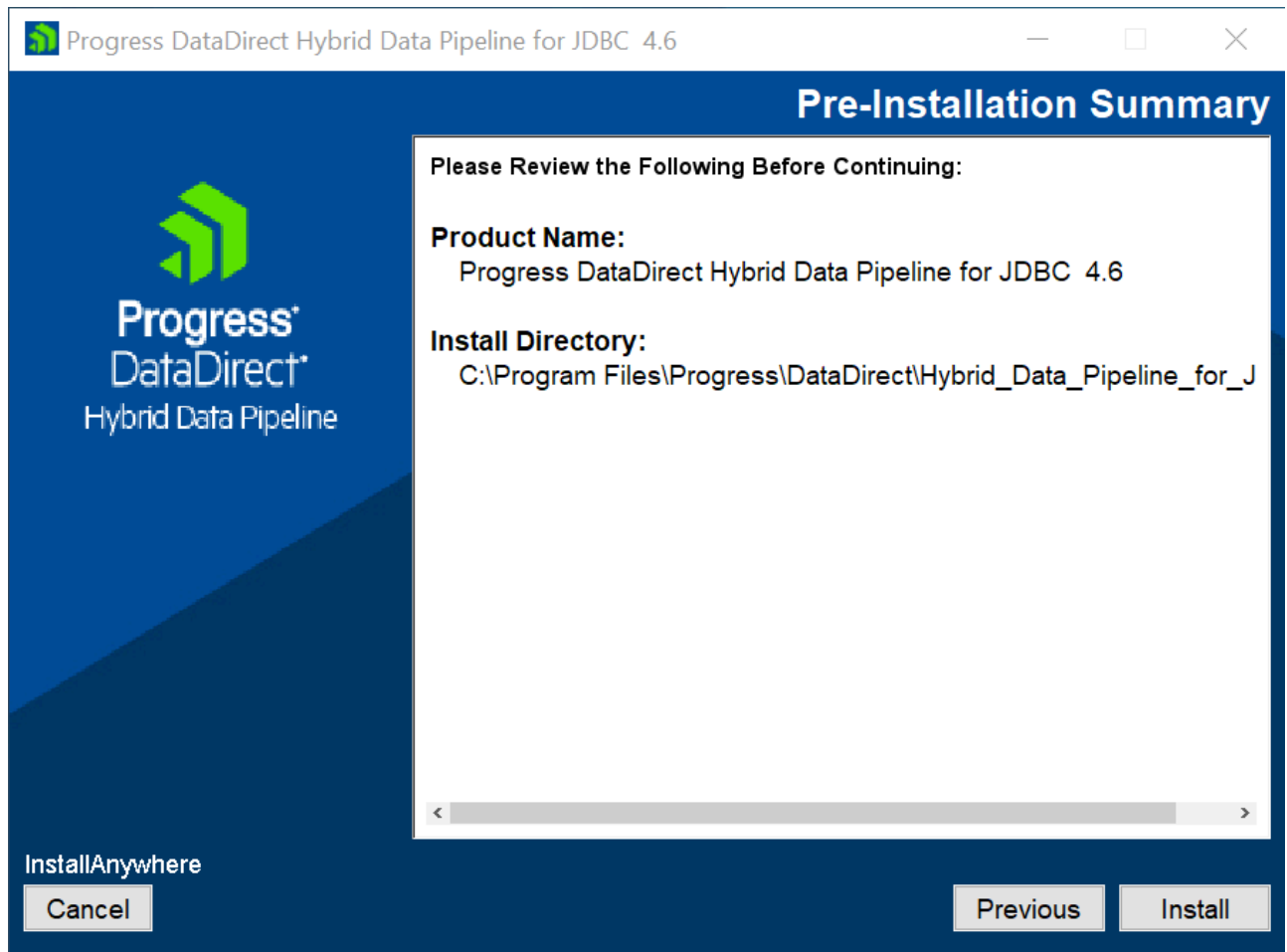
4. On the Install Directory page, accept the default installation path or select your own, and click **Next**.

Note: Deltek recommends accepting the default installation location.

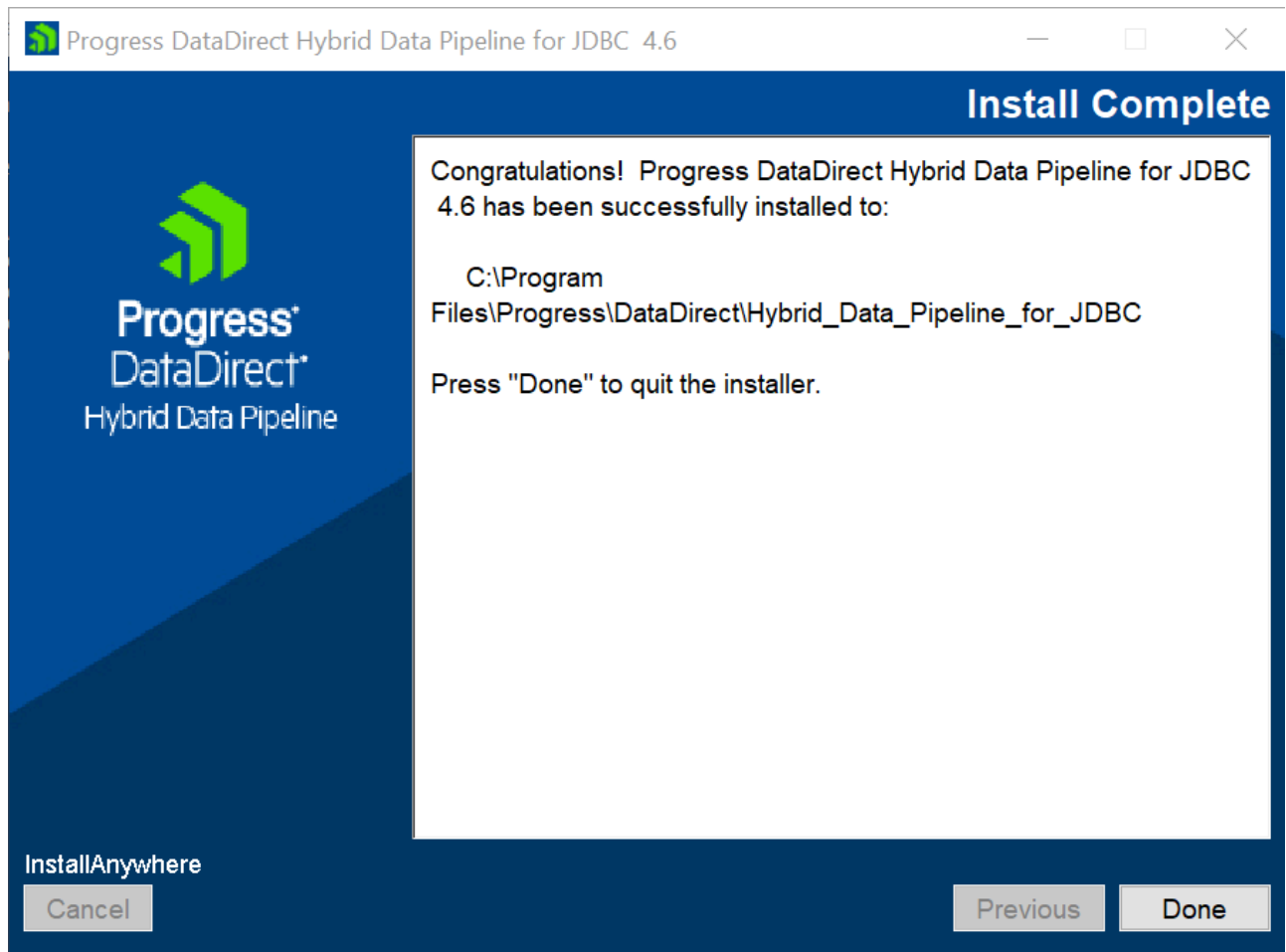


5. On the Pre-Installation Summary page, confirm all information is correct, and click **Install**.

Note: If any of the information is incorrect, click **Previous** to fix.



6. After the installation is complete, click Done.



Install the Linux ODBC Client Driver

Download the Hybrid Data Pipeline Linux ODBC Client Driver

To download the driver, navigate to <https://dsm.deltek.com/DFVE/odbc/GCCHDPODBCdriverLinux.zip>

For US Only customers, navigate to <https://dsm.deltek.com/DFVE/odbc/USOHDPDBCdriverLinux.zip>

The downloaded zip includes the following files:

- config.properties
- ddcloud.pem
- ddcloudTrustStore.jks
- OnPremise.properties
- PROGRESS_DATADIRECT_HDP_ODBC_<VERSION>_LINUX_32.bin
- PROGRESS_DATADIRECT_HDP_ODBC_<VERSION>_LINUX_64.bin

Install the Hybrid Data Pipeline Linux ODBC Client.

To install the client:

1. Execute the installer corresponding to the correct architecture

```
./PROGRESS_DATADIRECT_HDP_ODBC_4.6_LINUX_64.bin
```

2. When the Introduction page of the installation wizard displays, click **Next**.
3. On the Install Type page, accept the default selection of **Standard Installation**, and click **Next**.
4. On the Install Directory page, accept the default installation path or select your own, and click **Next**.

Note: Deltek recommends accepting the default installation location.

5. On the Pre-Installation Summary page, confirm all information is correct, and click **Install**.

Note: If any of the information is incorrect, click **Previous** to fix.

6. After the installation is complete, click **Done**.

Install the Linux JDBC Client Driver

Download the Hybrid Data Pipeline Linux JDBC Client Driver

To download the driver, navigate to <https://dsm.deltek.com/DFVE/odbc/GCCHDPJDBCdriverLinux.zip>

For US Only customers, navigate to <https://dsm.deltek.com/DFVE/odbc/USOHDPJDBCdriverLinux.zip>

The downloaded zip includes the following files:

- config.properties
- ddcloud.pem
- ddcloudTrustStore.jks
- OnPremise.properties
- PROGRESS_DATADIRECT_HDP_JDBC.jar

Install the Hybrid Data Pipeline Linux JDBC Client.

To install the client:

1. Execute the installer as root or with superuser permissions.

Note: Oracle Java or OpenJDK version 8 or 11 is required.

```
java -jar PROGRESS_DATADIRECT_HDP_JDBC.jar -i console
```

2. When the Introduction page of the installation wizard displays, press ENTER to continue.
3. On the Install Type page, accept the default selection of **Standard Installation**, and press ENTER.
4. On the Install Directory page, accept the default installation path or select your own, and press ENTER.

Note: Deltek recommends accepting the default installation location.

5. On the Pre-Installation Summary page, confirm all information is correct, and press ENTER.
6. Once the installation is complete, press ENTER to exit the installer.

Step Three: Configure ODBC Client

Configure the ODBC Client

To configure the ODBC client:

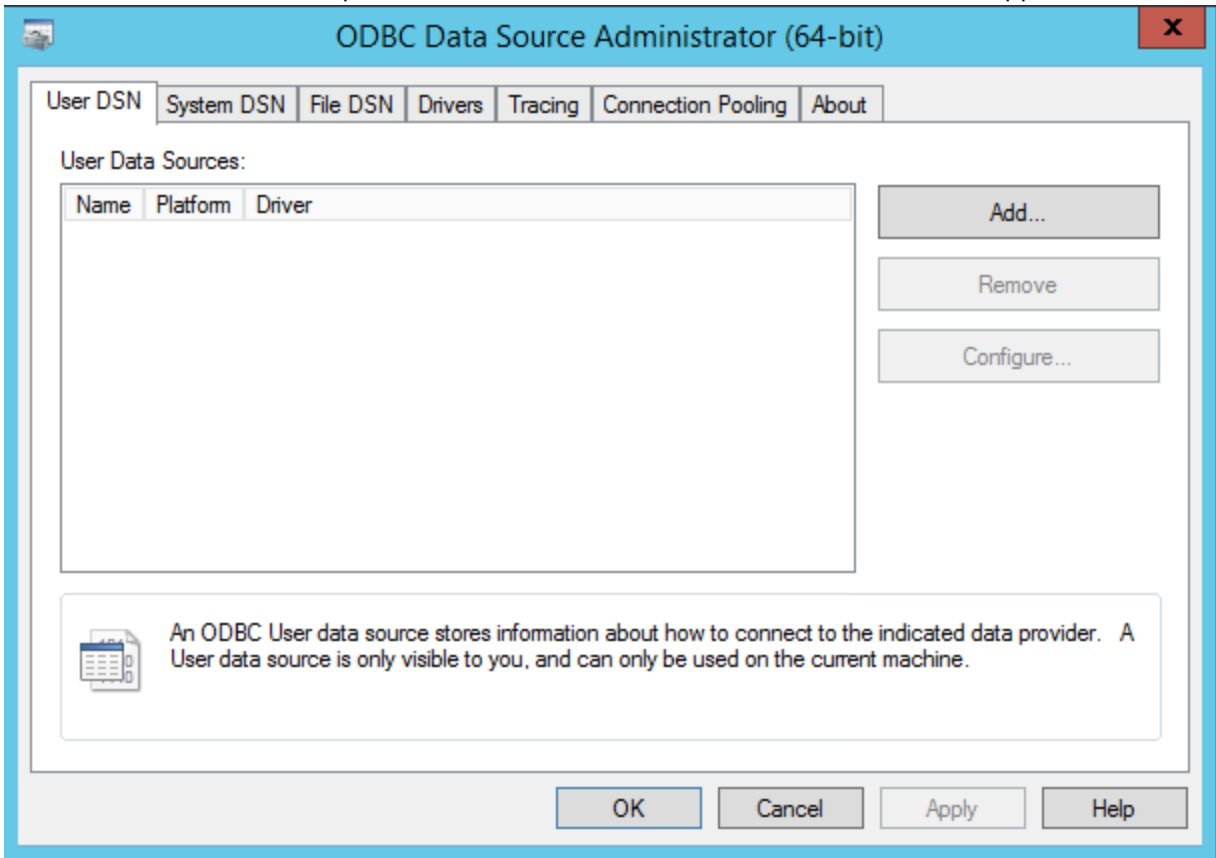
1. Open the ODBC Data Sources Administrator (XX-bit) application in Windows, and click **Add** on the appropriate DSN tab.

Be sure to open the correct architecture version of ODBC Data Source Administration (XX-bit) based on the architecture version of the driver that was installed; either 32-bit or 64-bit

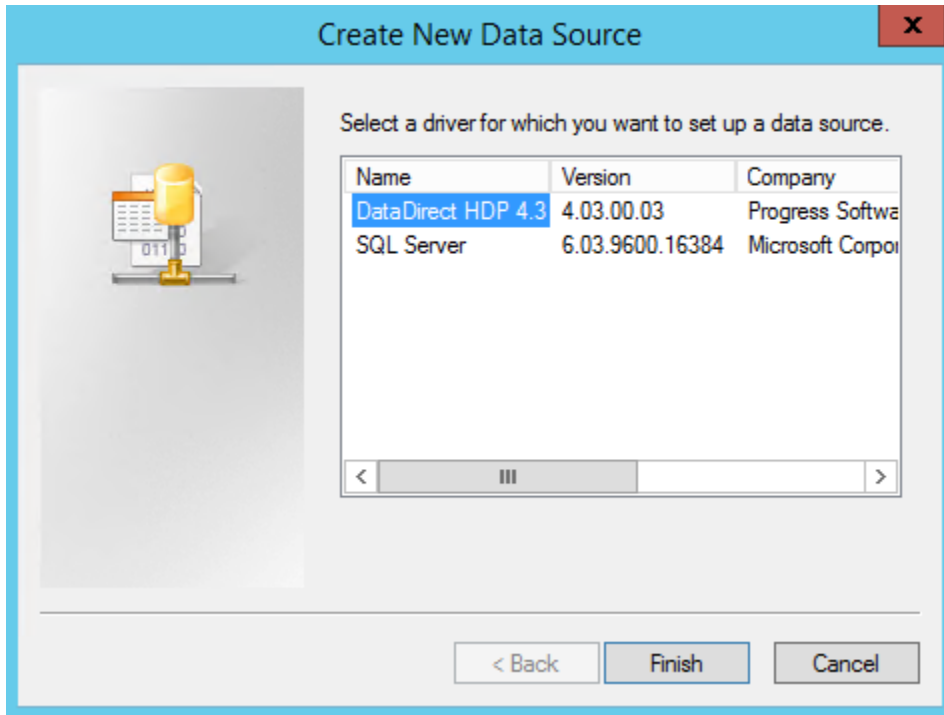
2. Select the appropriate DSN tab:
 - **User DSN:** Access to this DSN will be available only to the current logged-on user (for example, logged

onto Windows and using Excel).

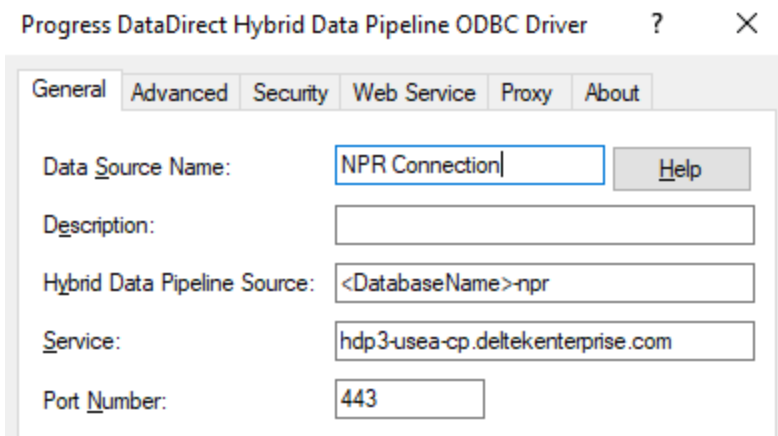
- **System DSN:** Access to this DSN will be available to any user that is allowed to authenticate to the Windows machine (for example, the service account used to run a data warehouse application).



3. When the Create New Data Source dialog box displays, select **DataDirect HDP X.X** from the list of available drivers, and click **Finish**.



4. On the General tab of the Progress DataDirect Hybrid Data Pipeline ODBC dialog box, provide the following information.
 - **Data Source Name:** You can enter **any name** using alpha and numeric characters. Do not use special characters, such as ampersand or percent.
 - **Description:** You can enter **any name** using alpha and numeric characters. Do not use special characters, such as ampersand or percent.
 - **Hybrid Data Pipeline Source:** This information will be provided to you in your service request ticket. Hybrid Data Pipeline Source can be received in the following formats.
 - For Non-Production Database connection: <DatabaseName>-npr
 - For Production Database connection: <DatabaseName>-prd
 - **Service:** Enter the applicable host entry for your Production and/or Non-Production systems. See below.
 - GCC: hdp3-usea-cp.deltেকenterprise.com
 - US Only – hdp-usea.costpointenterprise.com
 - **Port Number:** Enter 443.



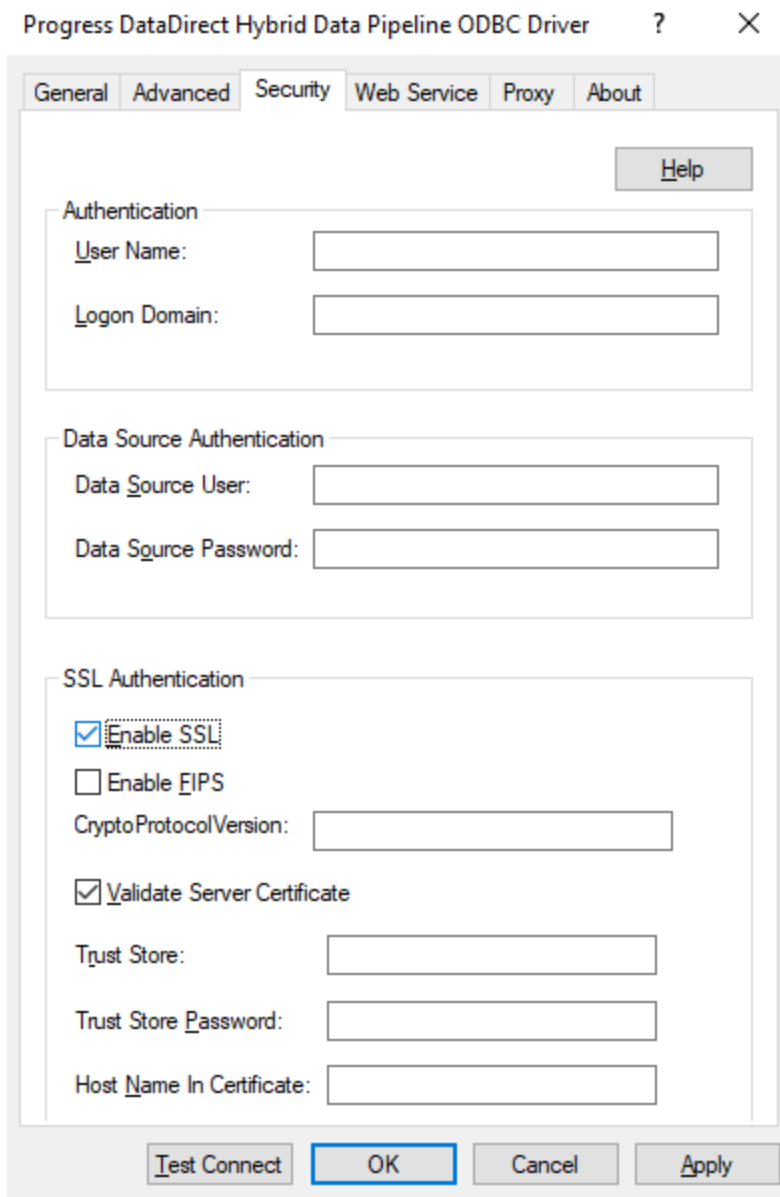
5. Click the Advance tab, and in the **Extended Options** field, enter **WorkArrounds=2**:

6. Click the Security tab, and in the **SSL Authentication** section, select the **Enable SSL** checkbox.

IMPORTANT:

You will need to follow the above procedure for each database to which you connect. Sample: Access to CPTRAN and TE CONFIG will require you to Add a data source for each

- CPTRAN_<6CharDomain>_CONFIG-npr
- TE_<6CharDomain>_CONFIG-npr



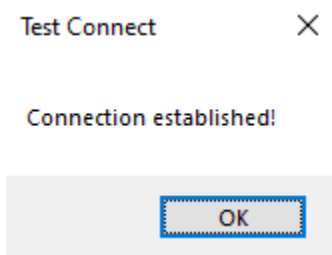
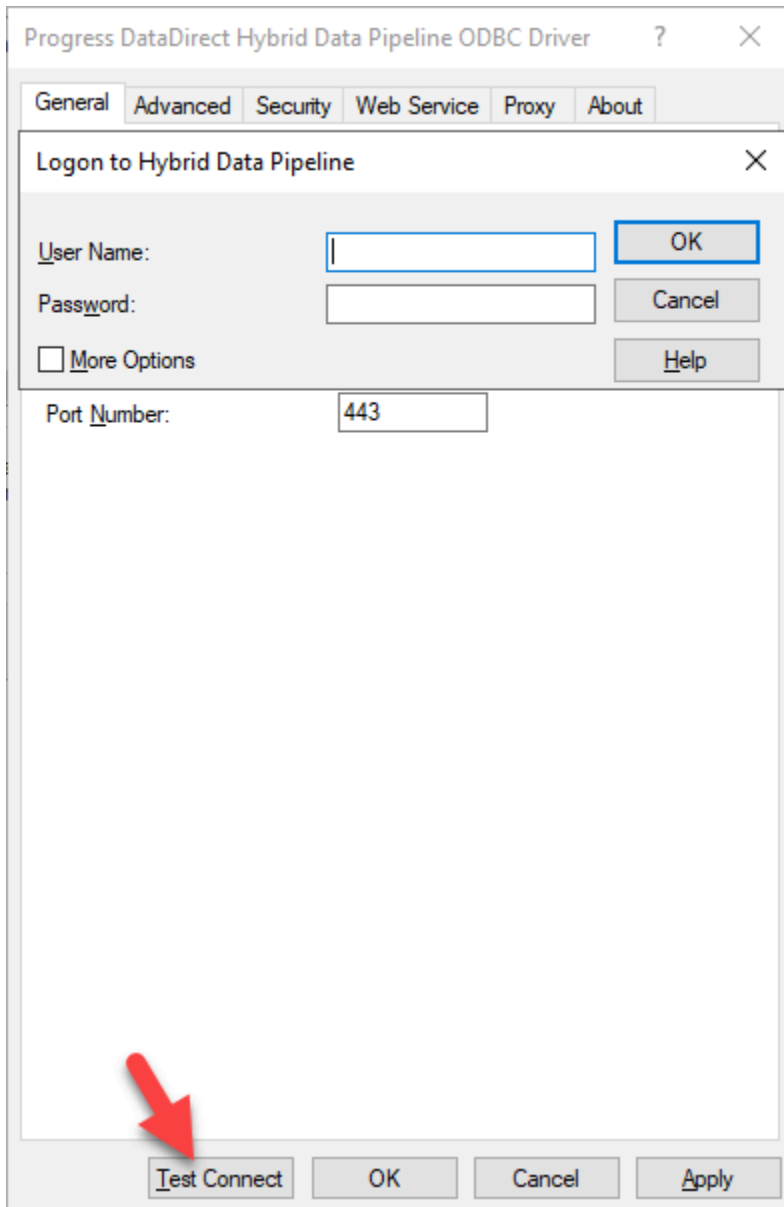
7. Test the connection by performing the following:

- a. Click **Test Connect**.
- b. Enter the username and password provided to you in your service request ticket.
- c. Click **OK**.

IMPORTANT:

Make sure to exclude extra spaces when copying both the username and the password. A Non-Production username and password should be used only for a Non-Production database connection; same with the Production username and password which will work only for the corresponding Production database

connection.



You can now use the configured ODBC driver to connect to the databases.