

Deltek Acumen Fuse >

Product Overview Series

Quick Reference Guide

Click on the topics to go directly to that page.

Features Overview	1
Acumen 360	3
Workbook Setup	5
Data Organization	6

Acumen Fuse 8.2 - Overview of Features



This infographic highlights the main features when using Acumen Fuse. It shows the steps to follow when setting up a project schedule, benefits and features, how Acumen integrates with other products and the types of metrics and reports you can create.

Project Maturity Framework

The schedule maturity model outlines the steps to build up a project schedule. It starts with the **Base** project plan (Schedule) which is then **Critiqued** and **Risk Adjusted**. The plan is **Optimized** to meet objectives so that the **Team** is aligned and confident with the schedule at the end of the process.

S1

The Base
A non-validated CPM (Critical Path Method) schedule with unknown realism.

S2

Critiqued
Schedule diagnostics are used to spot and correct trouble areas.

S3

Risk-Adjusted
Collaborate on project threats and model their impact, improving completion confidence.

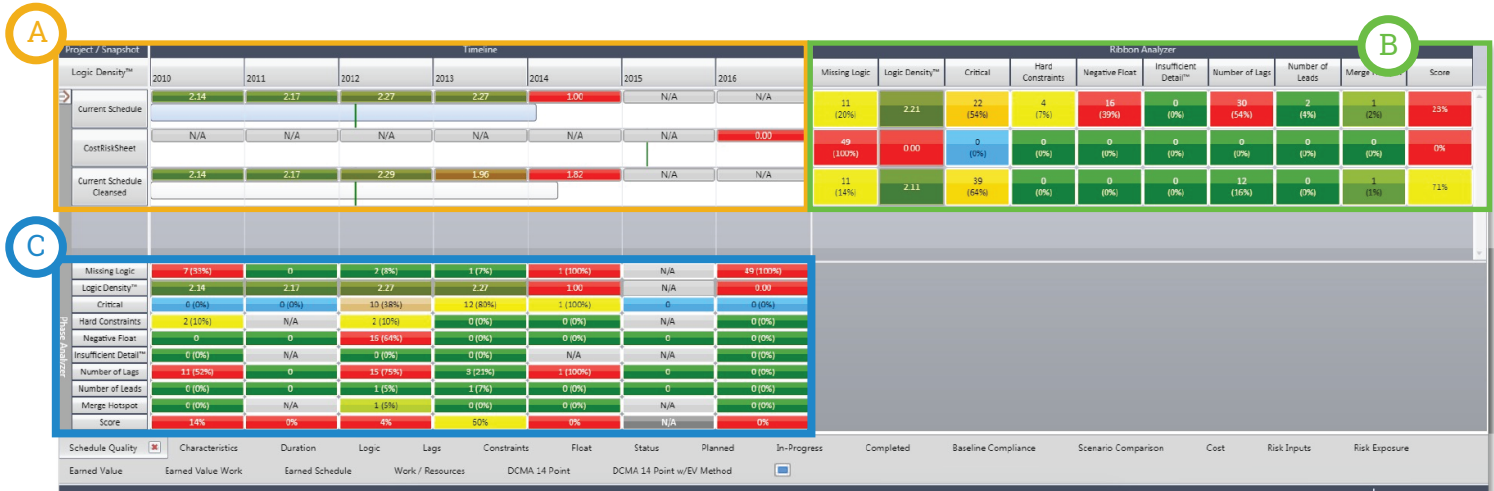
S4

Optimized
Accelerated scenarios are developed and evaluated to meet project and stakeholder objectives.

S5

Team-Aligned
Confidence in forecasted dates in improved schedule. Team buy in on the critiqued, risk adjusted and optimized schedule obtained.

Project Diagnostics



A Ribbon Viewer
It will show you what you have loaded in S1 projects tab.

B Ribbon Analyzer
You can see here the totals for each of these metrics.

C Phase Analyzer
Metrics by time slice.

Benefits

- Insight into shortcomings
- View by characteristics
- Improved project quality
- Reliable project plans

Audience

- Schedule / Planners
- Project Controls
- Claims Analyzers
- Hierarchy

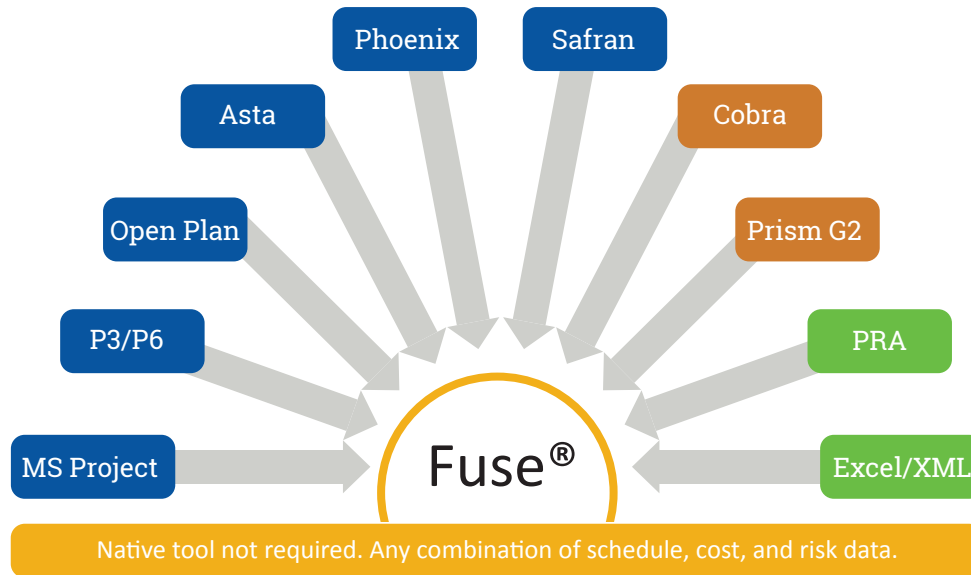
Features

- 350+ metrics
- Logic and Forensic Analyses
- Dashboard and Reports
- Industry Benchmarking
- FIPS 140-2 Security Compliant (new licenses)

Tool Integration

Deltek® Acumen Fuse® integrates with multiple schedule planning programs, risk analysis programs, cost analysis programs, and MS Excel. Source data can be any combination of schedule, cost, or risk data and doesn't require the native tool for import. By integrating with multiple programs, Deltek Acumen Fuse® can neutralize the issues that arise when projects or programs have multiple planning platforms in use.

Comprehensive



Types of Project Metrics - Fuse Metric Libraries

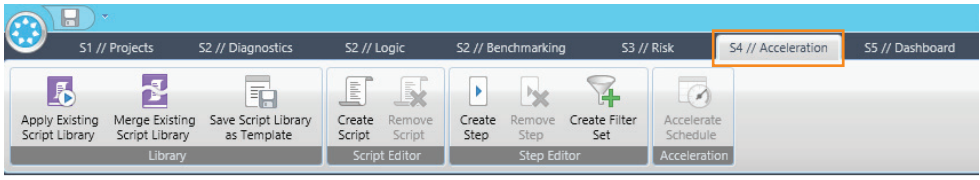
The metrics that come with Deltek Acumen Fuse® were created from project management best practices, industry standards, compliance metrics, and specific Fuse® metrics. These metrics are grouped into a Schedule Quality, Advanced, and Industry Standard Metric Library. Within these groups, individual metrics are listed together in categories of like metrics. All metrics can be customized for specific needs. For a complete listing of metrics and descriptions, see the Deltek Acumen Fuse® Metrics & Descriptions Guide.

Schedule <ul style="list-style-type: none"> • Logic • Float • Duration 	Cost <ul style="list-style-type: none"> • Overrun • Capacity • Burn rates 	Performance <ul style="list-style-type: none"> • Status • Completed • Delayed 	Characteristics <ul style="list-style-type: none"> • Level of detail • Constrained • Riding Data Date
Earned Value <ul style="list-style-type: none"> • CPI/SPI • Trending • Earned 	Risk <ul style="list-style-type: none"> • Exposure • Hot spots • Hidden paths 		

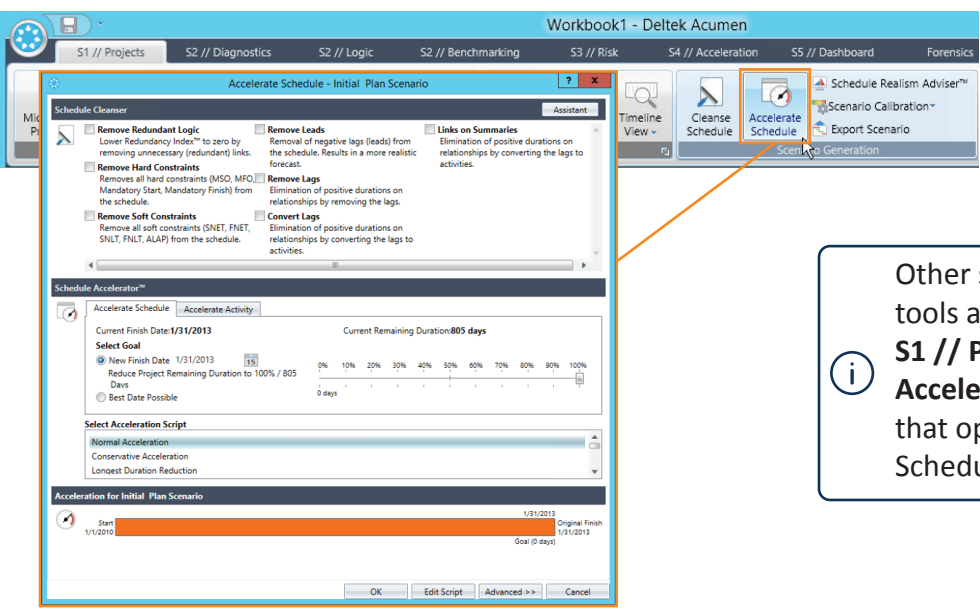
Reporting - Publish Analytical Results

Executive Briefing Summary of analysis results	Dashboard Interactive charts and graphs
Analyst Report To do list	API and Custom Reports Automation of existing reports

Acumen 360 is a separately licensed product within the Acumen tool. It is all about the reduction of schedule dates through the use of best practice methods. Sometimes referred to as **crashing the schedule** or **schedule recovery**, acceleration is a technique that is employed when a project falls behind, or has one or more delivery dates changed by the customer or stakeholders.



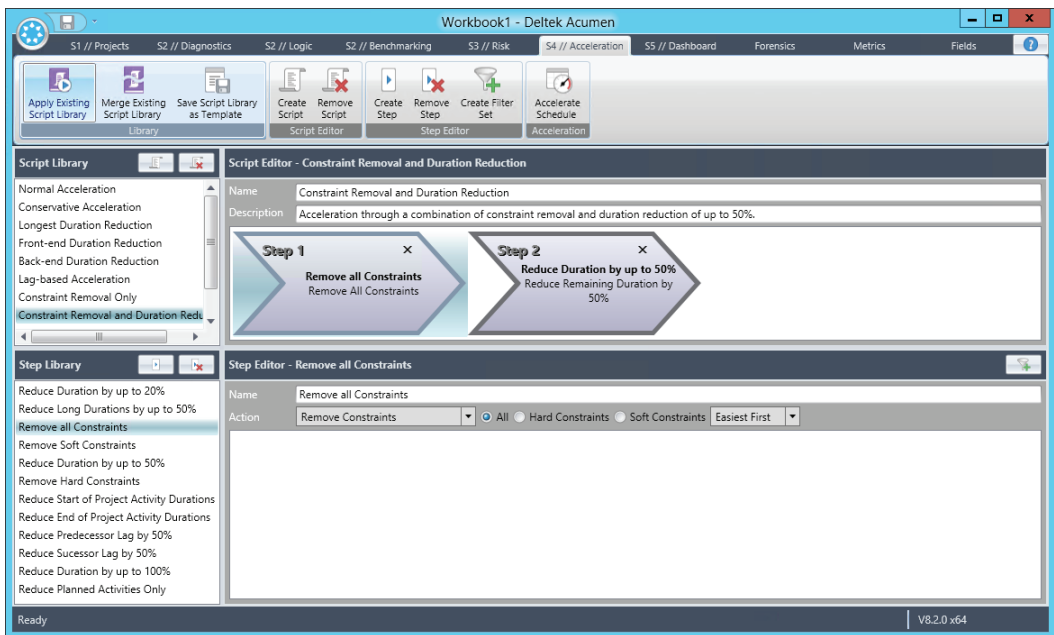
With Acumen 360, the **S4 // Acceleration** tab is available in the system.



Other schedule acceleration tools are also found in the **S1 // Projects** tab, such as the **Accelerate Schedule** button that opens the Accelerate Schedule dialog box.

Schedule Acceleration

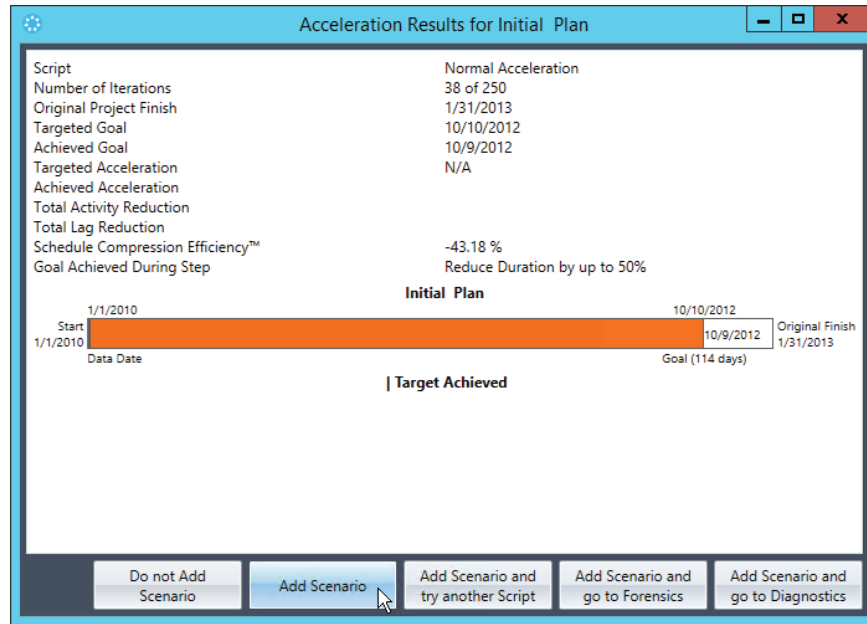
Acumen 360 provides tools that allow a scheduler, or possibly even a non-scheduler, to work through steps in a schedule to reduce the overall duration of a project.



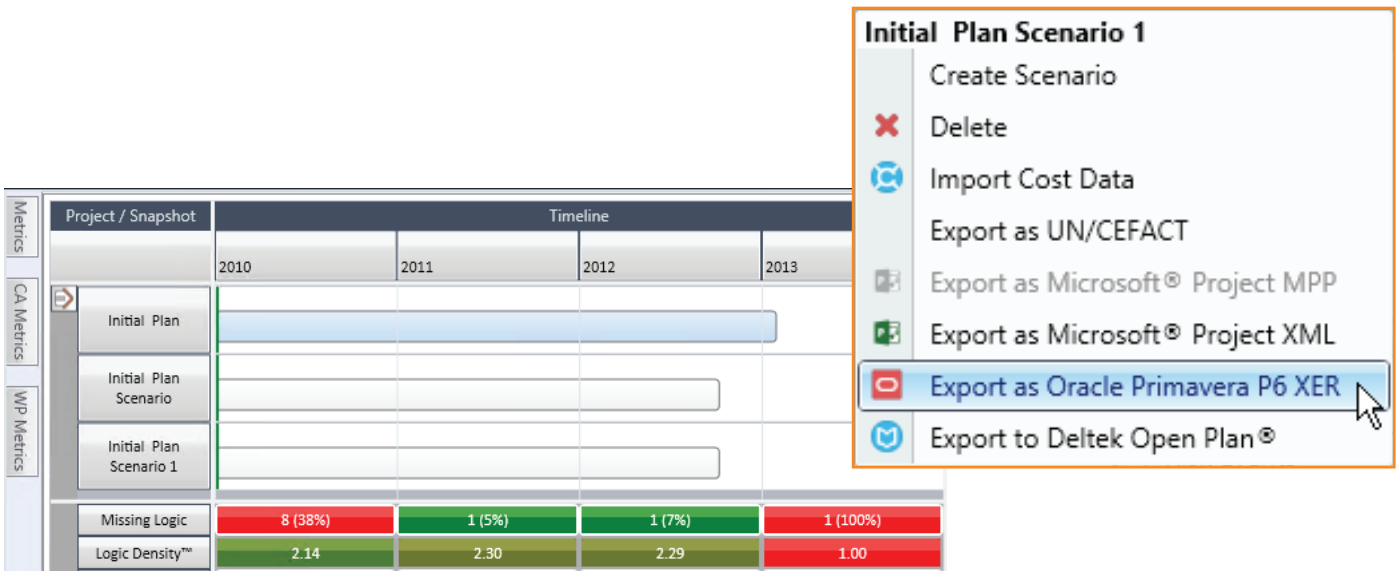
A range of preconfigured acceleration scripts can be used as-is or as customized acceleration processes. This simplifies and speeds up the process of schedule acceleration and allows you to try multiple scenarios in order to find the most optimum approach to schedule recovery.

Scenarios

Scenarios are copies of the original project where the accelerated version of the schedule are placed. This allows you to do multiple **what-if** accelerations and save each one to a different Scenario.



Once an optimum recovery process has been identified, the Acumen Scenario can be exported as a new project file and reopened in its original scheduling system with the changes already made.



Project / Snapshot	Timeline			
	2010	2011	2012	2013
Initial Plan	[Bar chart showing activity from 2010 to 2013]			
Initial Plan Scenario	[Bar chart showing activity from 2010 to 2013]			
Initial Plan Scenario 1	[Bar chart showing activity from 2010 to 2013]			
Missing Logic	8 (38%)	1 (5%)	1 (7%)	1 (100%)
Logic Density™	2.14	2.30	2.29	1.00

Initial Plan Scenario 1

- Create Scenario
- Delete
- Import Cost Data
- Export as UN/CEFACT
- Export as Microsoft® Project MPP
- Export as Microsoft® Project XML
- Export as Oracle Primavera P6 XER**
- Export to Deltek Open Plan®

Acumen Fuse 8.2 - Workbook Setup

This infographic highlights the process used when setting up the workbook structure. It goes through the main steps to help you construct your workbook.

Workbook Construction



Assign Baseline(s)

P6 XER files don't contain identified baseline data

Work Around

- Export a P6 baseline in XER format
- Merge it with the project dataset

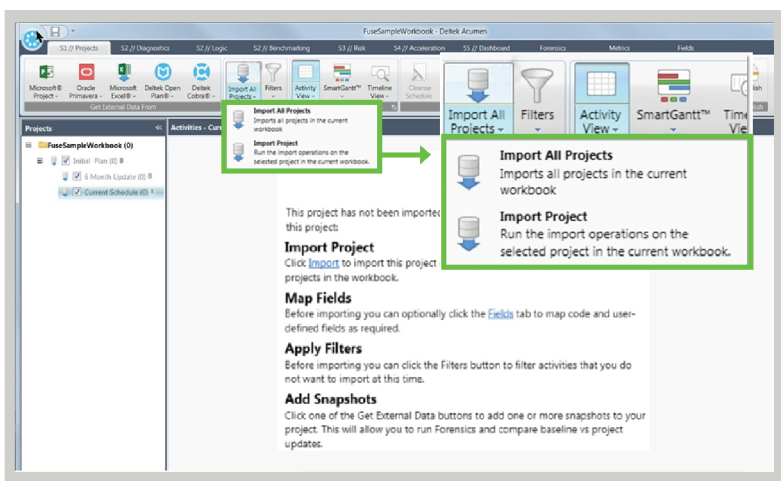
Merged fields:

- Baseline Duration
- Baseline Start
- Baseline Finish
- Baseline Work (resources assigned)
- Baseline Cost

Initial Plan	6 Month Update	Current Schedule	
Activity ID	Activity ID	Activity ID	ID
Description	Description	Description	Description
Activity Type	Activity Type	Activity Type	Activity Type
BL Duration	BL Duration	BL Duration	Baseline Duration
Planned/Original Duration	Planned/Original Duration	Planned/Original Duration	Original Duration
Actual Duration	Actual Duration	Actual Duration	Actual Duration
Remaining Duration	Remaining Duration	Remaining Duration	Remaining Duration

Import Project Data

The imported data is stored within the Deltek Acumen Fuse® workbook and any successive import will overwrite previously imported data.



Import **ALL** workbook data or individual files.

- Lock Content protection against Import All

Overrides existing version **ONLY** if same file name.

Re-import only when **SOURCE** data changes.

- Filters applied/unapplied
- Field mappings change
- Baseline assignment change

Imported data stored in Deltek Acumen Fuse® workbook.

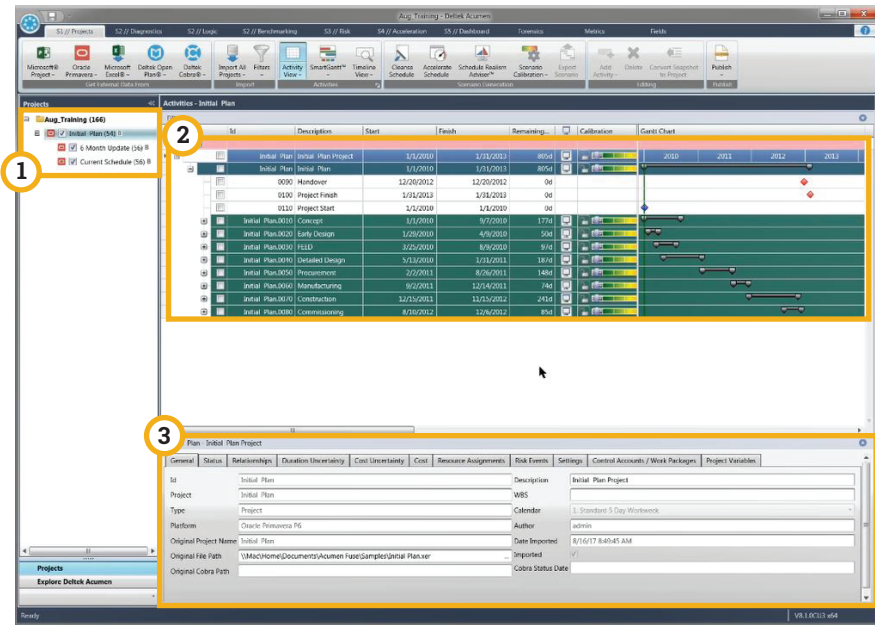
Note: Whenever source data is changed - filters applied/unapplied, field mappings changed, or baseline assignment changed – the project data **MUST** be re-imported.

Acumen Fuse 8.2 - Data Organization



This infographic highlights the many ways that data can be organised in Deltek Acumen Fuse®.

Interface



- 1 Navigation Panel
- 2 Activity / Project View
The default structure is WBS
- 3 Project or Activity Details View/Tabs

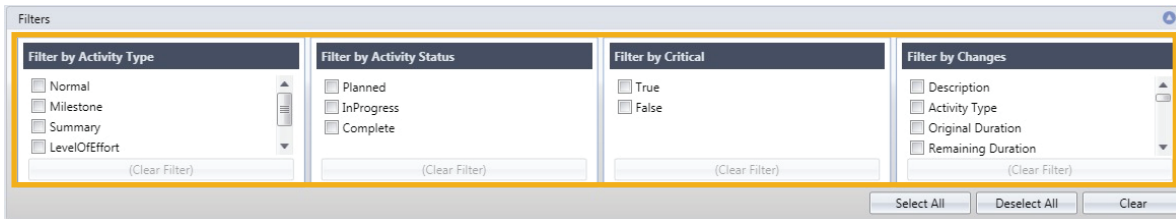
Setting up inside a Workbook
Throughout Acumen, whatever is selected in the left navigation panel, its corresponding information is displayed on the right.

Project Tab

Screen Sections

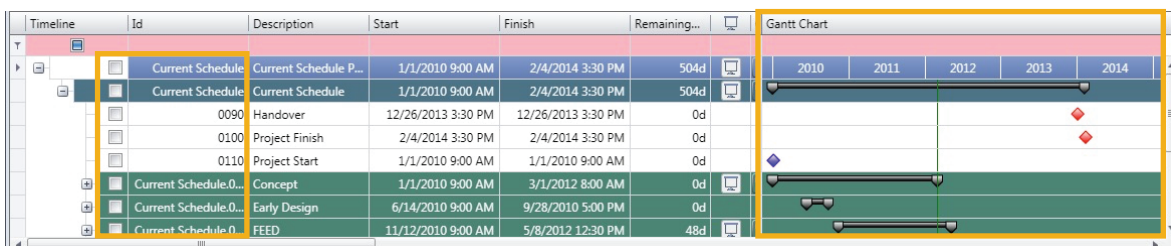
1 Project Quick Filters

Use Quick Filters for Activity Type, Activity Status, By Critical, By Changes to customize the data that you are viewing. For each filter, the data shown is dependent upon which filters have been checked.



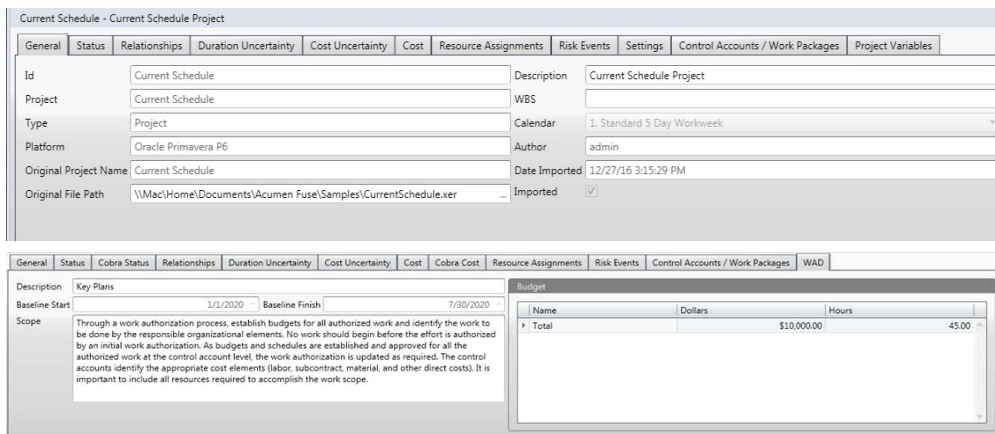
2 Project Schedule / Cost Data

Select your schedule on the left panel and view the Gantt chart on the right.



3 Project Information

The Project Information section displays all of the overall file information.



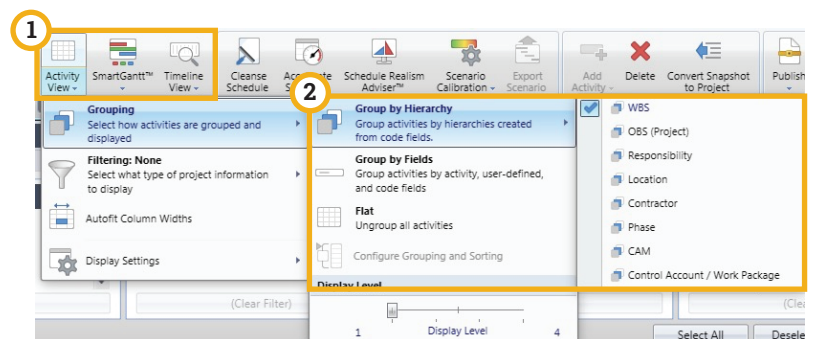
Project Views

Grouping and Sorting

1 Activity View, Timeline View, or SmartGantt™ View

2 Group By:

- Hierarchy
 - WBS - default for import
 - OBS
 - IMP
 - Others
- Fields
- Flat
- Customization Works in all Views



The Group by WBS View shows all of the workbook, project, or snapshot data in a WBS hierarchical format.

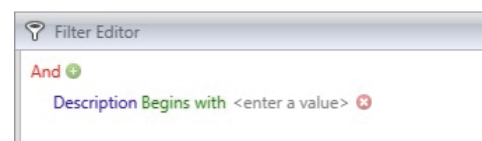
Customize the Data View

Group By WBS and Group By Fields views allow activities listed to be customized and tailored to view the desired data. Options for customizing the data view include:

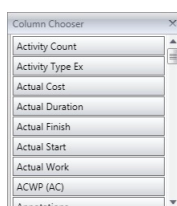
A Sort Ascending/Descending and Column Fit

Start	Finish	Remaining...
9/23/2005	5/4/2026	6,183
9/23/2005	5/4/2026	6,171
9/23/2005	5/4/2026	6,171
1/1/2010	2/18/2013	689
1/1/2010	2/4/2014	504
1/1/2010	1/31/2013	805

B Filtering - Quick and Editor



C Column Chooser and Arrangement



D Global Search

