



Deltek Acumen Fuse >

Logic Tracing and Metrics Series

Quick Reference Guide

Click on the topics to go directly to that page.

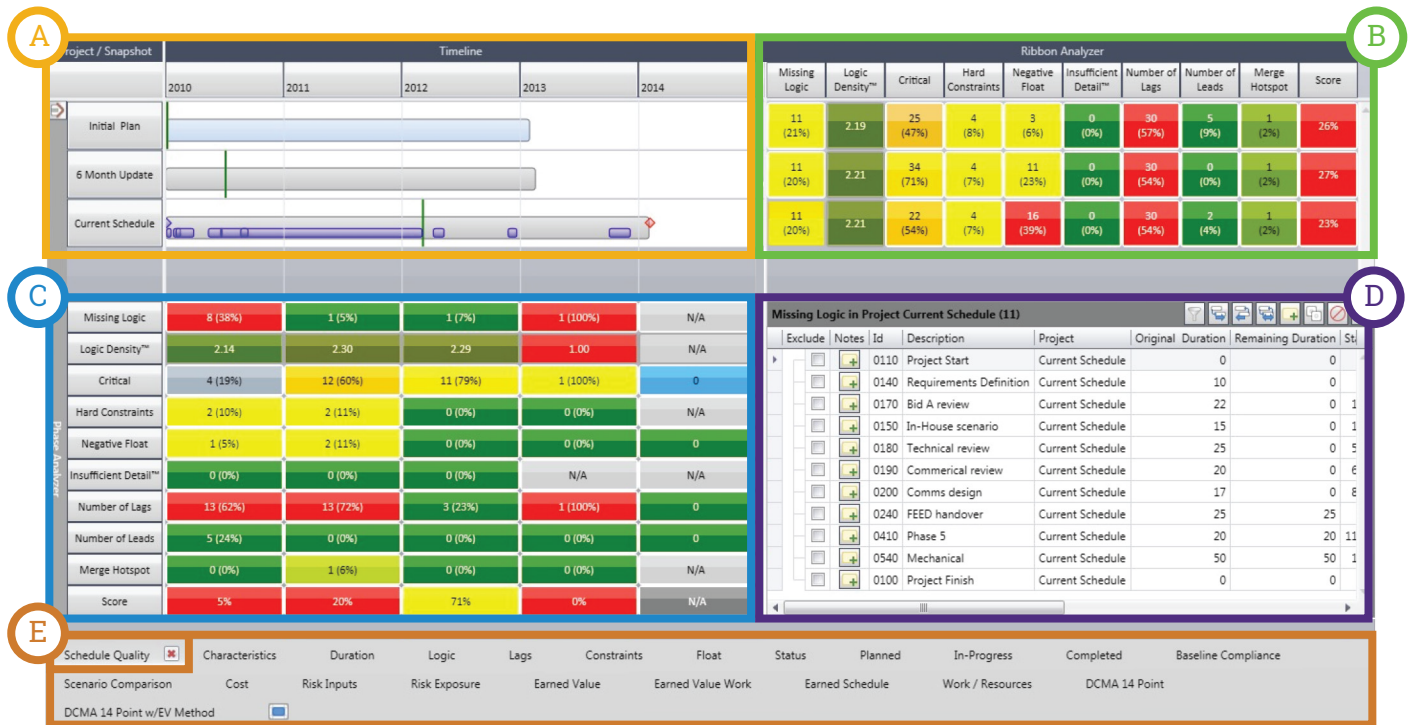
Viewer and Analyzers	1
Basic Metrics	2
Advanced Metrics	4
Benchmarking	6
Schedule Acceleration and Recovery	8

Acumen Fuse 8.2 - Viewer and Analyzers



This infographic highlights the different Viewers and Analyzers within Deltek Acumen Fuse®

Basic Diagnostics



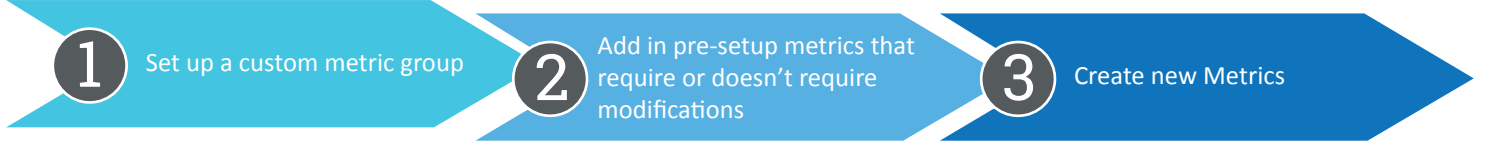
Parts of the screen:

- A Ribbon Viewer**
Displays information loaded in the S1 Projects tab.
 - Blue Ribbon- Parent
 - Gray Ribbon - Snapshots
 - White Ribbon - Copies created in Fuse
 - Green Ribbon - Status date
- B Ribbon Analyzer**
Displays totals for each metric.
- C Phase Analyzer**
Metrics by time slice.
- D Activity Browser**
Lists the specific activity details in this window.
Ribbon and Phase Analyzer may have as many metrics as you want.
- E Ribbon Views/ Metric Playlist**
Enables you to select what you would like to measure e.g. Schedule Quality

Create and Edit Metrics

The Metrics Tab is a powerful component of Deltek Acumen Fuse® enabling you to create and/or modify the existing 250+ metrics. You can create your own set of metrics with your own set of thresholds, specific to your needs and organization. The Metrics Tab functionality enables **creating, adding, modifying, and sharing** metrics.

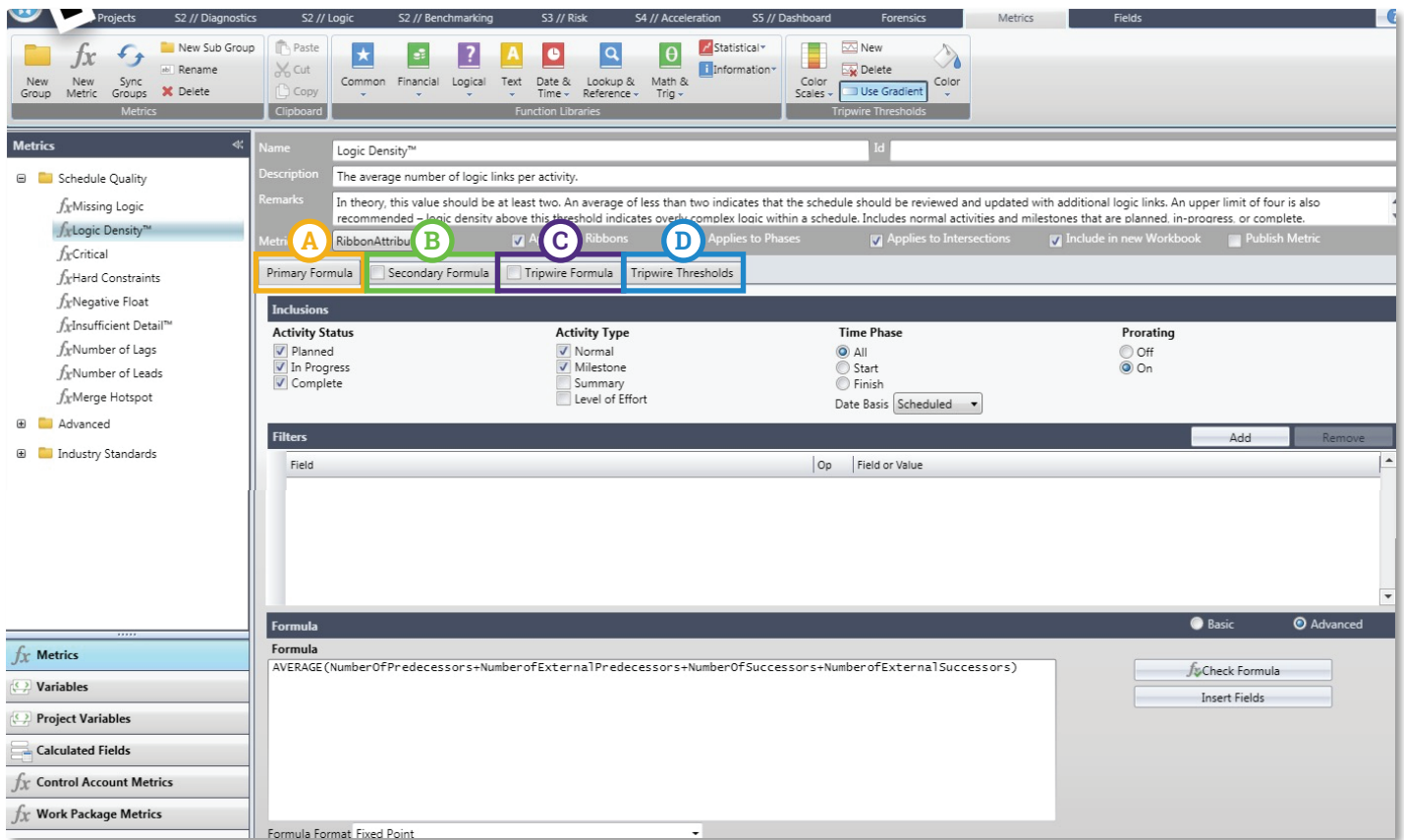
Steps for creating a custom set of metrics



It is always easier to modify a metric than create a new one. Additionally, a good work process to use is to copy existing workable metrics and paste them into the custom metric group. Having a separate metric group keeps the new/modified metrics separate and maintains the original set of Fuse® metrics for future reference.



Components



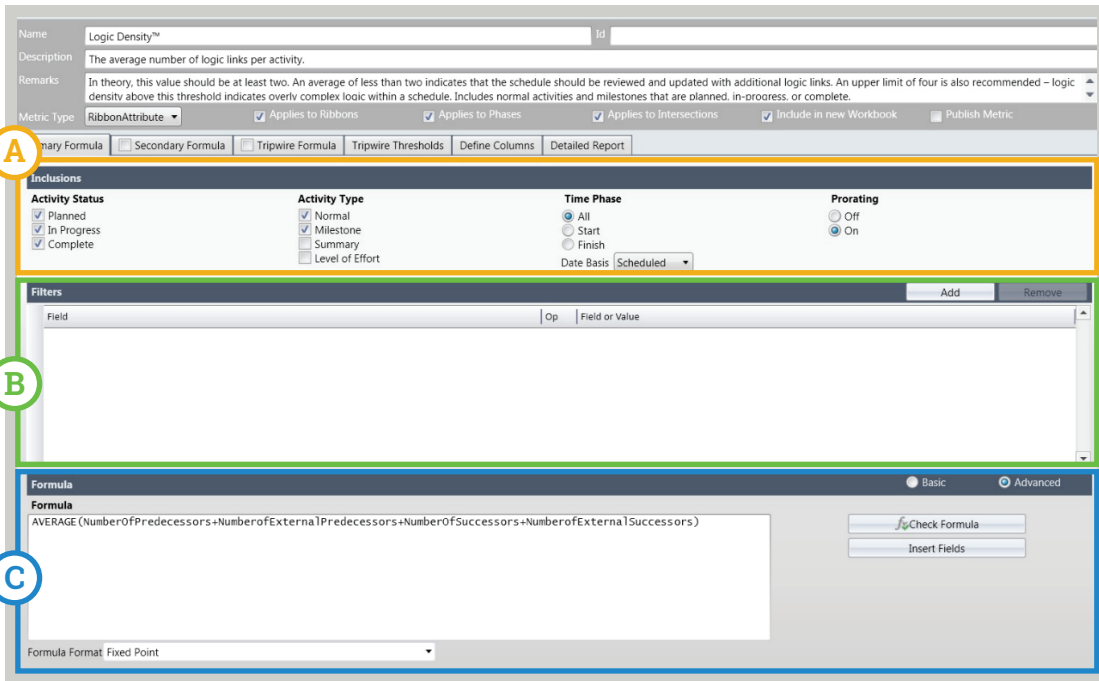
A Primary Formula
A number or count.

B Secondary Formula
A percentage.

C Tripwire Formula
List of activities for the Activity Browser.

D Tripwire Threshold
Sets levels or colors.

Primary, Secondary, and Tripwire Formulas



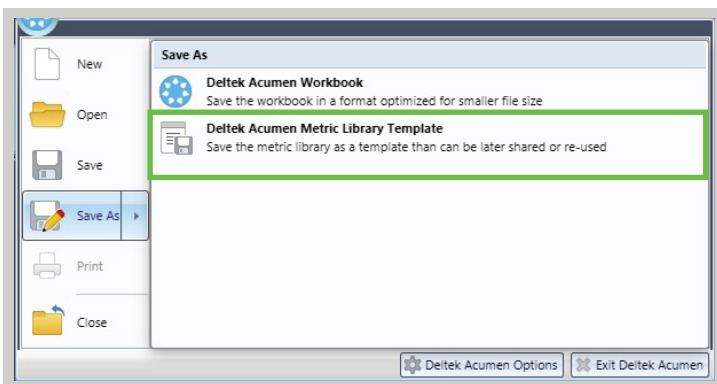
- A** **Inclusions**
- Activity Status - Planned, in-progress, complete
 - Activity Type - Normal, milestones, summary, LOEs/hammocks
 - Time Period - Start, finish, or touch current time window
 - Pro-rating Across Phase

- B** **Filters**
- Simple filters based on fields
 - Multiple filters - Treated as **AND** compounds

- C** **Formulas**
- Advanced mode only
 - Advanced functions (**SUM, MAX, AVG, etc.**), user defined formulas
 - OR Logic

Metric Template

All of the new metrics are saved with the individual workbook in which they were created. However, the custom set of metrics can also be shared across an organization. The metrics are first saved as a Fuse® Metric Library Template. The metric library can be located anywhere and once saved, it can be shared via email.

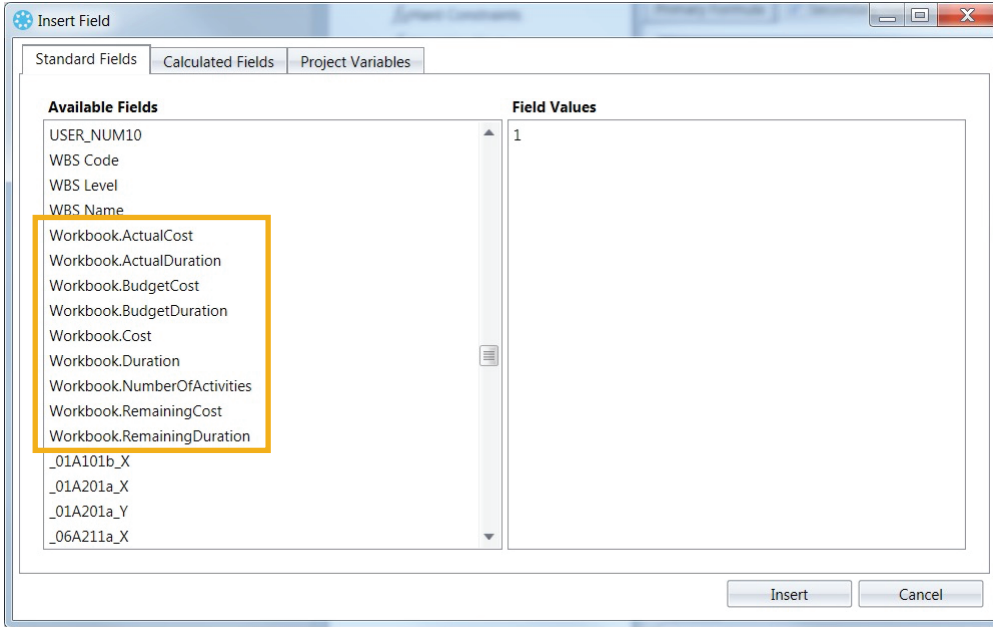


- **Save as** Metric Library Template
- Share with Organization
- Re-Locate Metric Library default location
- Valid for **NEW** Workbooks
- New Metrics can be Copy/Pasted to retrofit an old workbook



Workbook Level Metrics

There are metric fields that can be calculated on the entire workbook. These metrics are particularly helpful if the workbook is a **program** or a **portfolio**. They are available to be used for all formulas (**basic and advanced**) and are typically used to calculate a percentage in the Secondary Formula for an Advanced Metric.

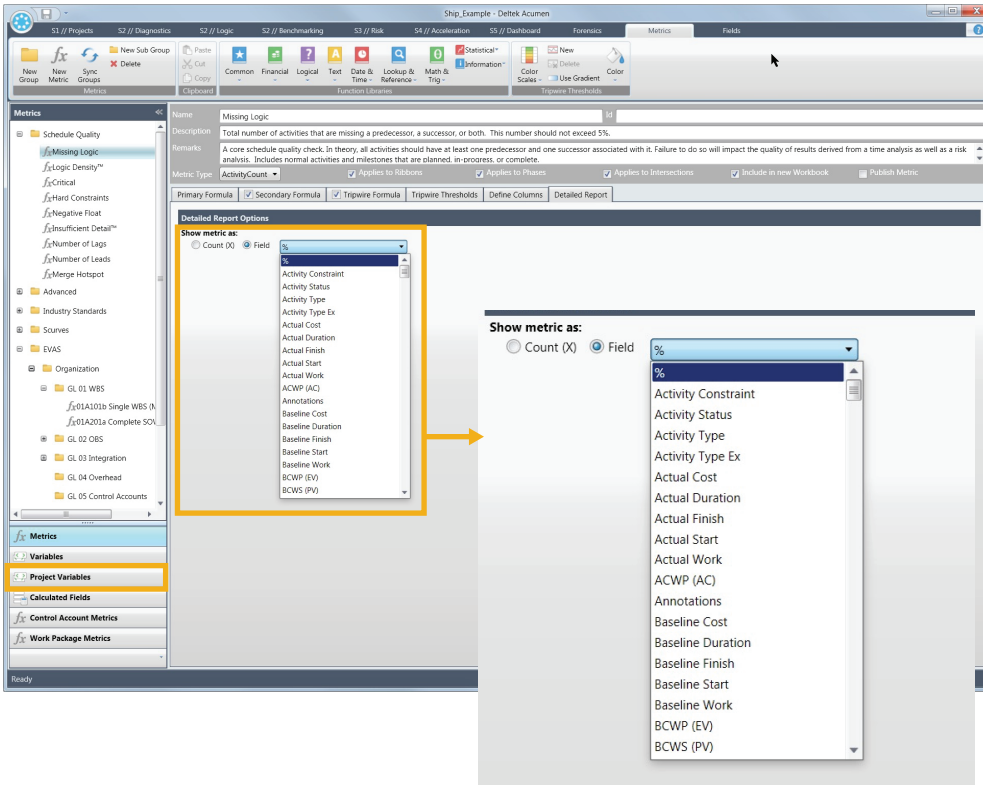


Available for All Formulas

Program or Portfolio Comparisons

Used to Calculate a Percentage in the Secondary Formula

Detailed Report

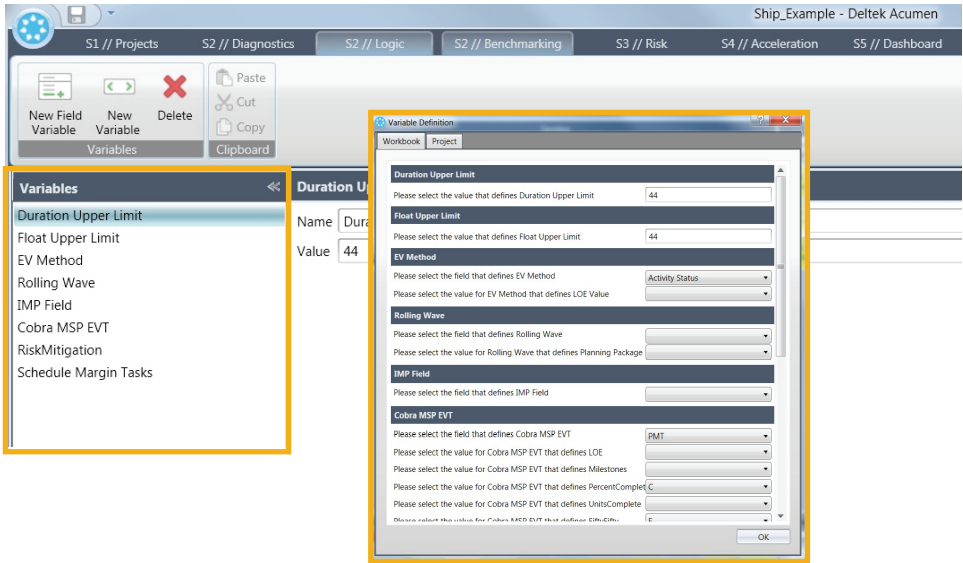


Specifies Displaying an 'X' or a Specific Field when Tripped

Used with Project Variables and Pass/Fail Custom Metrics

Metric and Project Variables

Metric Variables enable metrics to be defined against generic fields and values prior to knowing what these values actually are. Once the Metric Variable is **defined**, it can be used just like any other field with a filter or a metric definition. A value for the variable can be set up when the variable definition is created, or it can be set up the first time that Acumen Fuse® is run.



Variable Value or Variable Field

- Create a Value or Field in a Generic Metric - use throughout the project
- Variable Value = High Cost
- Variable Field = Owner

Fuse Options

- Set initial value in definition
- Update during Acumen Fuse® analysis

Project Variables

SHIP1 - SHIP1 Project										
General	Status	Relationships	Duration Uncertainty	Cost Uncertainty	Cost	Resource Assignments	Risk Events	Settings	Control Accounts / Work Packages	Project Variables
Project Variable										SHIP1
1	19A101b_X									
	19A101b_Y									
	19A301a_X									
	20A101a_X									
	20A201a_X									
	21A401a_X									
	21A401a_Y									
	21A601a_X									

Variable Description: X = Check indicates - that Price and Usage Variance formulas ARE correctly applied? Pass/Fail

Ribbon Analyzer											
27A101a	27A101b	27A102a	27A103a	27A104a	27A104a	27A105a	27A106a	27A203a	27A401a	CA TCPI	CA CPI
CA Co...	CA Co...	WP Ti...	CA Do...	CA ETC...	WP ET...	CA Is A...	CA Do...	WP La...	WP Pr...	EAC	Cum
0	-1	0 (0%)	0 (0%)	0 (0%)	0 (0%)	0 (0%)	0 (0%)	0	-1	1.000	0.000
0	0	0 (0%)	0 (0%)	0 (0%)	0 (0%)	0 (0%)	1 (11%)	0	0	0.940	1.490

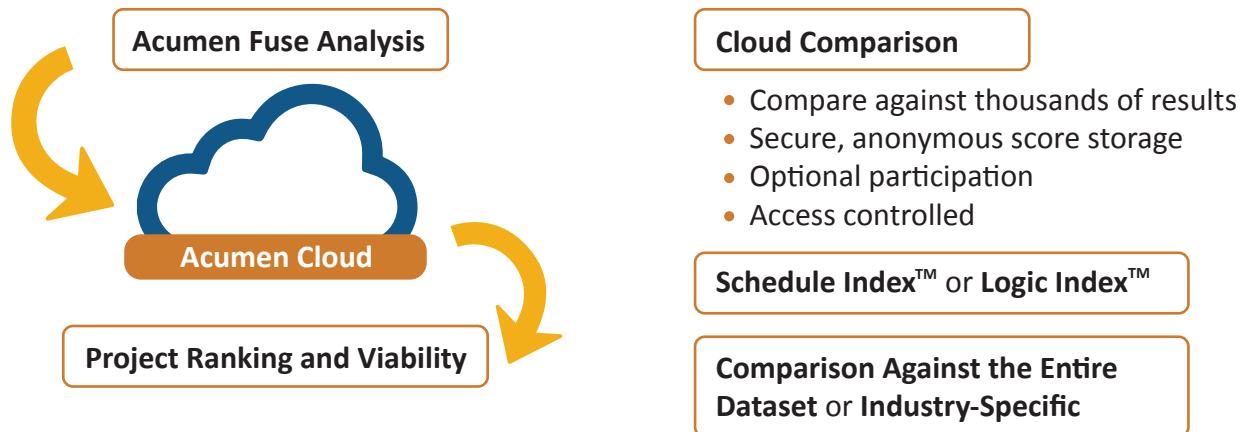
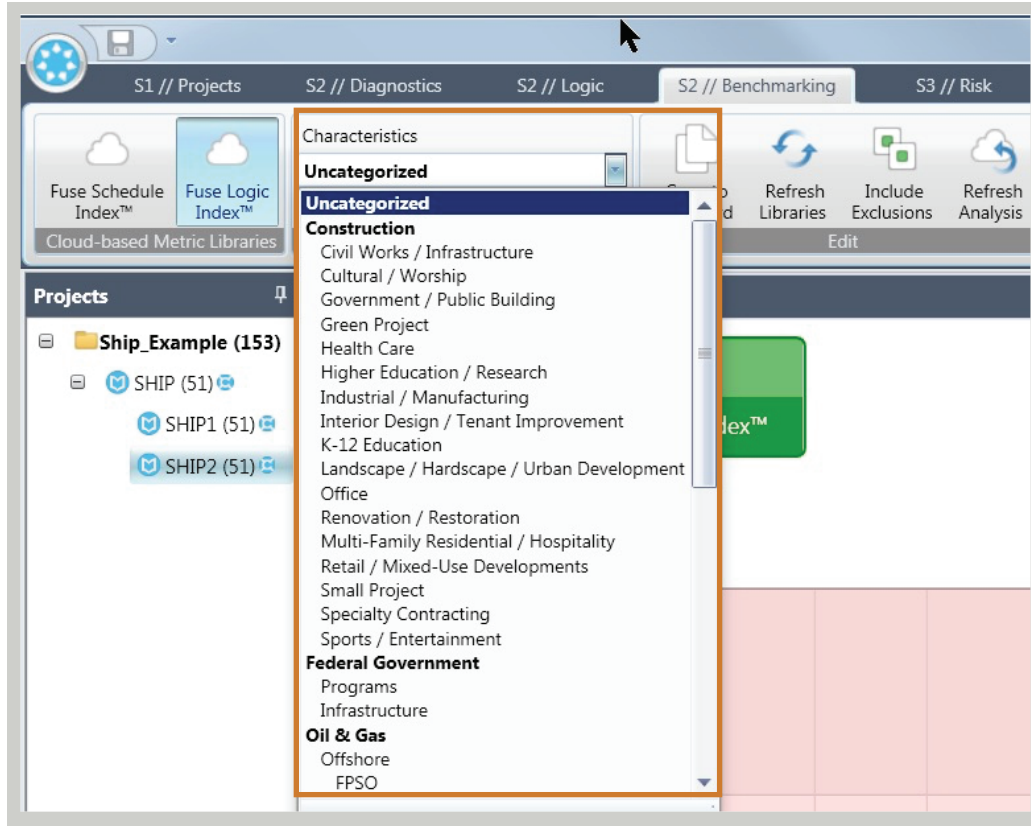
1 Allows Metrics to Evaluate Pass/Fail or On/Off Project Characteristics

2 EVAS Metric Project Variables can have a "no value" and gray color.

Note: **Project Variables** can be copied to new snapshots.

Global Comparison

The Benchmark Analysis ([S2//Benchmarking Tab](#)) compares an individual score result against thousands of similar results in a secure, anonymous site. Participation in the comparison is optional and access is controlled.

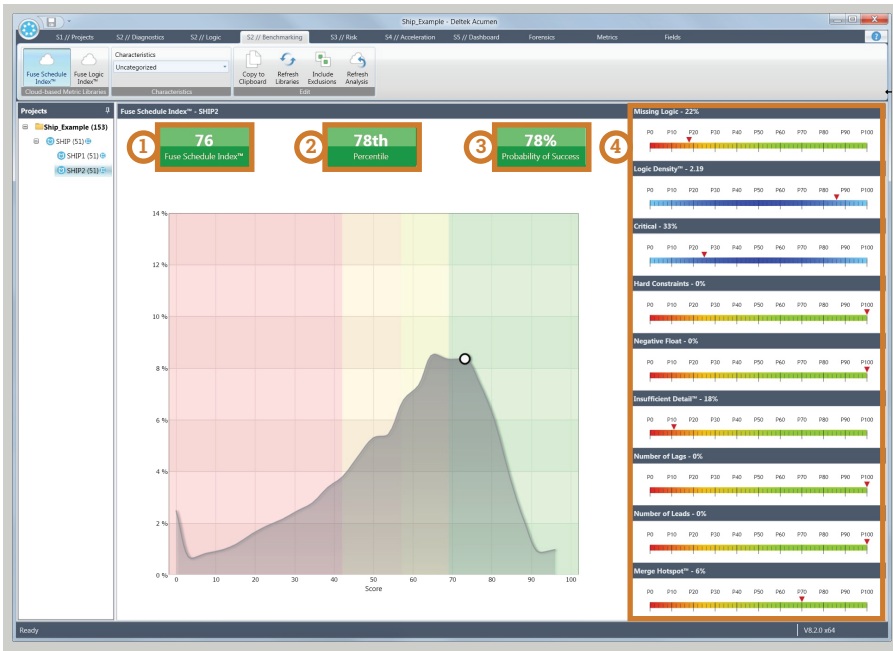


Schedule Index™ and Logic Index™

The score results for the Fuse Schedule Index™ and the Fuse Logic Index™ are compared, as well as the percentiles for the individual metrics that make up the indices. By default, the selected score is compared against all the scores for all of the industries in the database. A more targeted comparison can be gained by selected a specific industry from the pull-down menu.

Schedule Index™

The Fuse Schedule Index™ analysis gives an index, percentile vs. the database, a probability of success based on the schedule index, and the individual metric percentiles.



- 1 Index
- 2 Percentile
- 3 Probability of Success (Schedule Index)
- 4 Individual Metric Percentiles

Logic Index™

The Fuse Logic Index™ gives an index, percentile, and the individual metric percentiles.



- 1 Index
- 2 Percentile
- 3 Individual Metric Percentiles

Overview

Deltak Acumen 360™ gives you the power to recover or accelerate your schedule through creating scenarios to find the optimal acceleration for your schedule situation.

Types of Schedule Acceleration



Targeted Acceleration

- Defined Goal
- Scenario to Meet Goal
- Customize Acceleration
- Strategy or Protocol

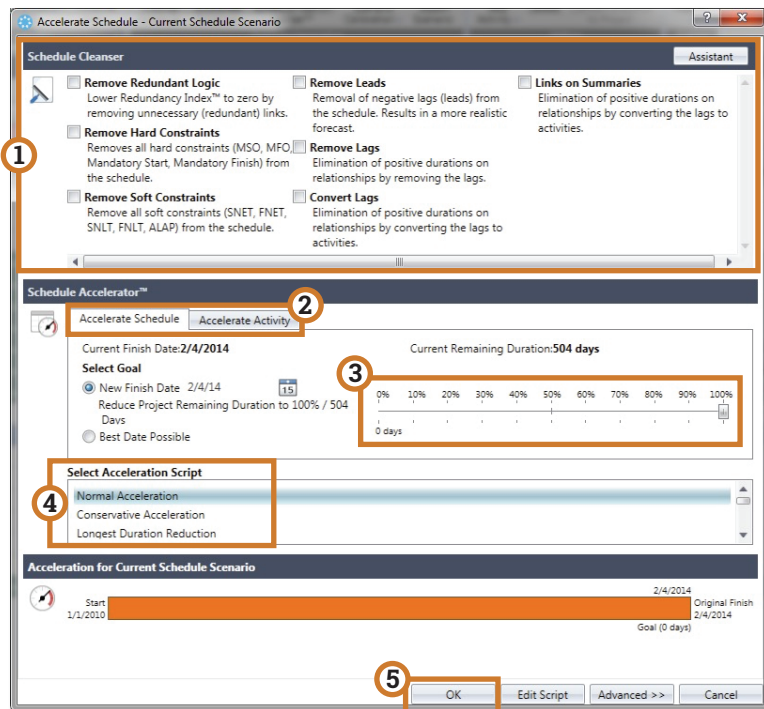


Interactive Acceleration

- Accelerate or Decelerate
- Proposal Development
- Previous Project Profile Matching
- Funding Strategy Matching
- Early Incentive Achievement

Targeted Acceleration

In Targeted Acceleration, a specific **end date** or **acceleration target** is chosen, with a specific protocol for the actual acceleration. **Schedule Cleansing** may be used as part of an acceleration protocol. The **Accelerate Schedule** button is located in the S1//Projects Tab menu.



1 Schedule Cleanse

2 Select Schedule or Activity

3 Select the Acceleration Goal

4 Choose Acceleration Script

5 Run the Acceleration

Targeted Acceleration

Acceleration Script

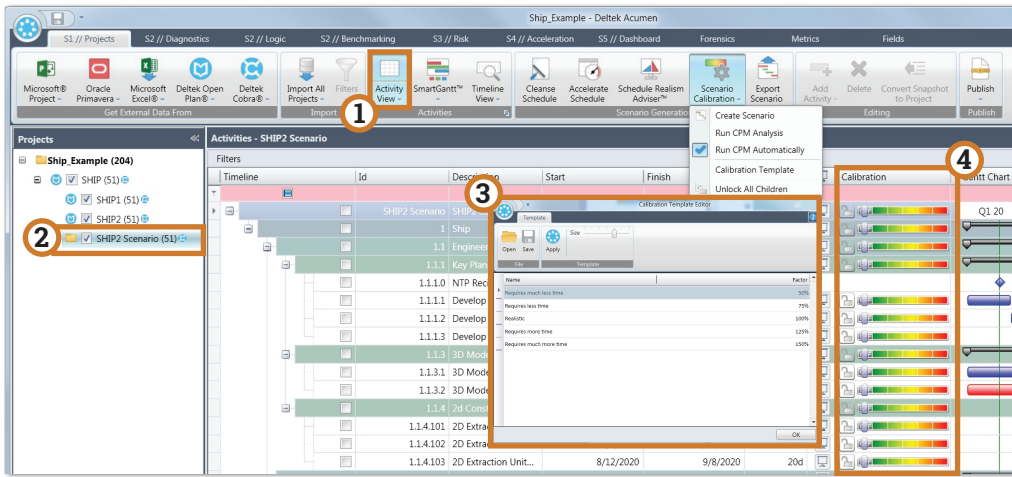
- Normal Acceleration
- Conservative Acceleration
- Longest Duration Reduction
- Front-end Duration Reduction
- Back-end Duration Reduction
- Lag-based Acceleration
- Constraint Removal Only
- Constraint Removal and Duration Reduction
- Extreme Acceleration
- Planned Activity Acceleration

Methodology

- Reduce remaining durations by up to 50%
- Reduce remaining durations by up to 20%
- Reduce long durations by up to 50%
- Reduce start of project activities remaining durations by 50%
- Reduce end of project activities remaining durations by 50%
- Reduce predecessor and successor lags by 50%
- Remove all constraints
- Remove all constraints + reduce remaining durations by up to 50%
- Remove all constraints + Reduce predecessor and successor lags by 50%
- + Reduce remaining durations by up to 100%
- Reduce planned activity remaining durations by 50%

Interactive Acceleration/Deceleration

Work Process and Calibration Template



- 1 Set Project View
- 2 Create Scenario
- 3 Calibration Template
 - Choose Number of Levels
 - Edit Level Names
 - Edit Level Factors
 - Save/Open/Apply
- 4 Calibrate using Sliders

Using Sliders

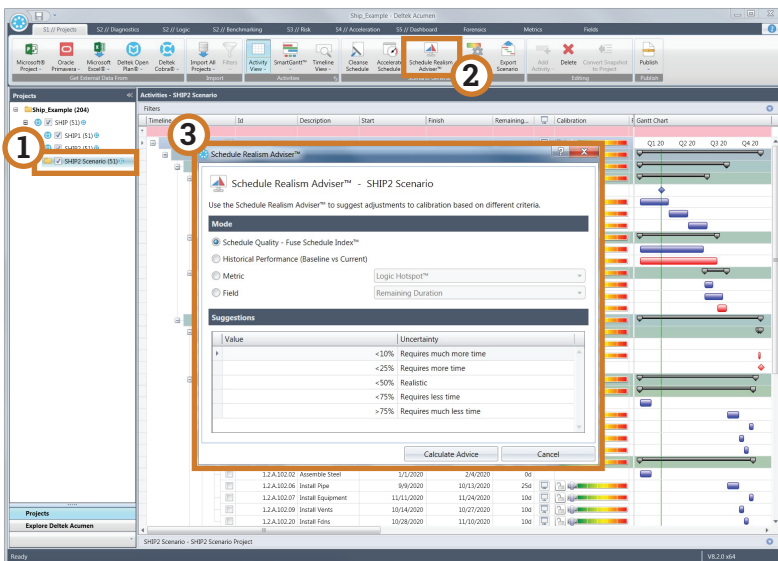
The slider levels can be set one of two ways, from the top down to the exceptions, or, set the exceptions and then go up and set the general level.



- 1 Colors Match Template Levels
- 2 Apply to:
 - Remaining Duration
 - Time Dependent remaining cost
- 3 Set slider for Hierarchy
- 4 Exceptions are locked

Schedule Realism Advisor™

The Schedule Realism Advisor™ calculates and shows advice for the realism of a project or snapshot scenario.



- 1 Create Scenario
- 2 Set up Advice for Project or Snapshot
 - Schedule Quality per Activity
 - Historical Performance
 - Metric Field (Standard or Custom)
 - Field (User or Code Field)
- 3 Set slider for Hierarchy
 - Summary or Individual
 - Impacts the Remaining Duration